

Myomesin-2 (Y644) polyclonal antibody

Catalog: BS3333

Host: Rabbit

Reactivity: Human, Mouse, Rat

BackGround:

Myomesin-1 (190 kDa) and myomesin-2 (165 kDa) are components of the vertebrate myofibrillar M band and are associated with Titin, Myosin and Connectin. The myomesin proteins are responsible for the formation of a head structure on one end of the Titin string that connects the Z and M bands of the sarcomere. Myomesin-1 and -2 have unique N-terminal domains and are expressed mainly in skeletal muscle. The gene encoding human myomesin-1 maps to chromosome 18p11.31-p11.32.

Product:

Rabbit IgG, 1mg/ml in PBS with 0.02% sodium azide, 50% glycerol, pH7.2

Molecular Weight:

~ 190 kDa

Swiss-Prot:

P54296

Purification&Purity:

The antibody was affinity-purified from rabbit antiserum by affinity-chromatography using epitope-specific immunogen and the purity is > 95% (by SDS-PAGE).

Applications:

WB: 1:500~1:1000

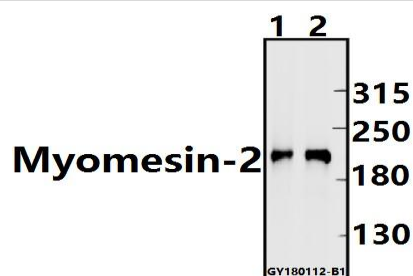
Storage&Stability:

Store at 4 °C short term. Aliquot and store at -20 °C long term. Avoid freeze-thaw cycles.

Specificity:

Myomesin-2 (Y644) polyclonal antibody detects endogenous levels of Myomesin-2 protein.

DATA:



Western blot (WB) analysis of Myomesin-2 (Y644) pAb at 1:1000 dilution

Lane1: The Heart tissue lysate of Rat(10ug)

Lane2: The Heart tissue lysate of Mouse(10ug)

Note:

For research use only, not for use in diagnostic procedure.

Bioworld Technology, Inc.

Add: 1660 South Highway 100, Suite 500 St. Louis Park, MN 55416, USA.

Email: info@bioworld.com

Tel: 6123263284

Fax: 6122933841

Bioworld technology, co. Ltd.

Add: No 9, weidi road Qixia District Nanjing, 210046, P. R. China.

Email: info@biogot.com

Tel: 0086-025-68037686

Fax: 0086-025-68035151