

ZDHHC9 (K364) polyclonal antibody

Catalog: BS3363

Host: Rabbit

Reactivity: Human, Mouse, Rat

BackGround:

Zinc-finger proteins contain DNA-binding domains and have a wide variety of functions, most of which encompass some form of transcriptional activation or repression. ZDHHC9 (zinc finger, DHHC-type containing 9), also known as DHHC9, CGI-89, ZNF379 or CXorf11, is a 364 amino acid protein that localizes to the membrane of the endoplasmic reticulum and contains one DHHC-type zinc finger. Expressed at high levels in brain, lung, kidney, liver and skeletal muscle, ZDHHC9 exists in a complex with GOLGA7 and, via its DHHC domain, functions as a palmitoyltransferase that is specific for H-Ras and N-Ras. Mutations in the gene encoding ZDHHC9 are associated with X-linked mental retardation and colorectal cancer, the latter of which suggests a role in tumorigenesis.

Product:

Rabbit IgG, 1mg/ml in PBS with 0.02% sodium azide, 50% glycerol, pH7.2

Molecular Weight:

~ 41 kDa

Swiss-Prot:

Q9Y397

Purification&Purity:

The antibody was affinity-purified from rabbit antiserum by affinity-chromatography using epitope-specific immunogen and the purity is > 95% (by SDS-PAGE).

Applications:

WB: 1:500~1:1000

IHC: 1:50~1:200

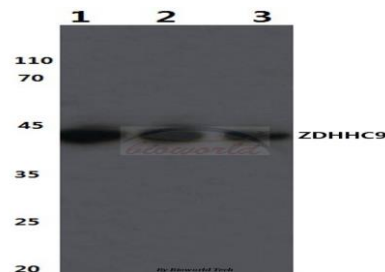
Storage&Stability:

Store at 4 °C short term. Aliquot and store at -20 °C long term. Avoid freeze-thaw cycles.

Specificity:

ZDHHC9 (K364) polyclonal antibody detects endogenous levels of ZDHHC9 protein.

DATA:



Western blot (WB) analysis of DHHC-9 (K364) polyclonal antibody at 1:500 dilution

Lane1:Hela cell lysate

Lane2:Mouse kidney tissue lysate

Lane3:Rat brain tissue lysate

Note:

For research use only, not for use in diagnostic procedure.

Bioworld Technology, Inc.

Add: 1660 South Highway 100, Suite 500 St. Louis Park, MN 55416, USA.

Email: info@bioworld.com

Tel: 6123263284

Fax: 6122933841

Bioworld technology, co. Ltd.

Add: No 9, weidi road Qixia District Nanjing, 210046, P. R. China.

Email: info@biogot.com

Tel: 0086-025-68037686

Fax: 0086-025-68035151