

CYB561D2 (H86) polyclonal antibody

Catalog: BS3424

Host: Rabbit

Reactivity: Human, Mouse, Rat

BackGround:

CYB561D2 (Cytochrome b561 domain-containing protein 2), also known as putative tumor suppressor protein 101F6, is a 222 amino acid highly hydrophobic protein that contains six membrane spanning domains. Localized to endosomes and endoplasmic reticulum of the perinuclear region, CYB561D2 contains 2 heme-binding sites, through which it reduces ferric ions. CYB561D2 is ubiquitously expressed, with highest levels in lung, liver and kidney. Though expression of CYB561D2 is abundant in normal lung bronchial epithelial cells, CYB561D2 is absent in most lung cancers. The gene encoding CYB561D2 maps to human chromosome 3p21.3, a region that is prone to genetic alterations and is associated with frequent and early allele loss in many human cancers. Exogenous expression of CYB561D2 leads to the induction of caspase-independent apoptotic and autophagic pathways, resulting in the synergistic killing of tumor cells. This suggests an important role for CYB561D2 as a therapeutic intervention in cancer treatment.

Product:

1mg/ml in PBS with 0.1% Sodium Azide, 50% Glycerol.

Molecular Weight:

~ 24 kDa

Swiss-Prot:

O14569

Purification&Purity:

The antibody was affinity-purified from rabbit antiserum by affinity-chromatography using epitope-specific im-

munogen and the purity is > 95% (by SDS-PAGE).

Applications:

WB: 1:500~1:1000

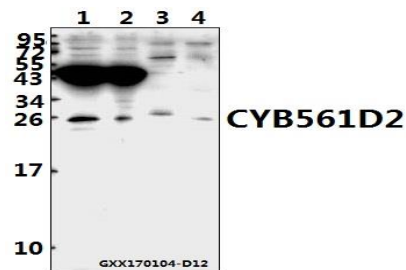
Storage&Stability:

Store at 4 °C short term. Aliquot and store at -20 °C long term. Avoid freeze-thaw cycles.

Specificity:

CYB561D2 (H86) polyclonal antibody detects endogenous levels of CYB561D2 protein.

DATA:



Western blot (WB) analysis of CYB561D2 (H86) polyclonal antibody at 1:500 dilution

Lane1:A549 whole cell lysate(40ug)

Lane2:DLD whole cell lysate(40ug)

Lane3:The Spleen tissue lysate of Mouse(40ug)

Lane4:The Spleen tissue lysate of Rat(40ug)

Note:

For research use only, not for use in diagnostic procedure.

Bioworld Technology, Inc.

Add: 1660 South Highway 100, Suite 500 St. Louis Park, MN 55416, USA.

Email: info@bioworld.com

Tel: 6123263284

Fax: 6122933841

Bioworld technology, co. Ltd.

Add: No 9, weidi road Qixia District Nanjing, 210046, P. R. China.

Email: info@biogot.com

Tel: 0086-025-68037686

Fax: 0086-025-68035151