

mGluR-2/3 (N867) polyclonal antibody

Catalog: BS3430

Host: Rabbit

Reactivity: Human, Mouse, Rat

Background:

The mGluR proteins (metabotropic Glutamate Receptors) are members of the G-protein-coupled receptor family and are functionally and pharmacologically distinct from the GluR proteins (ionotropic Glutamate Receptors). The eight currently known mGluR proteins are mediated by two G-proteins with opposing regulation of adenylate cyclase pathways. The activities of mGluR1 and mGluR5 are mediated by a G-protein that activates a phosphatidylinositol-calcium second messenger system and generates a calcium-activated chloride current. The remainder of the eight sub-types of mGluR have an activity mediated by a G-protein that inhibits adenylate cyclase activity. mGluR-3, which may interact with GRASP, acts as a receptor for glutamate.

Product:

Rabbit IgG, 1mg/ml in PBS with 0.02% sodium azide, 50% glycerol, pH7.2

Molecular Weight:

~ 95 kDa

Swiss-Prot:

Q14416/Q14832

Purification&Purity:

The antibody was affinity-purified from rabbit antiserum by affinity-chromatography using epitope-specific im-

munogen and the purity is > 95% (by SDS-PAGE).

Applications:

IHC: 1:50~1:200

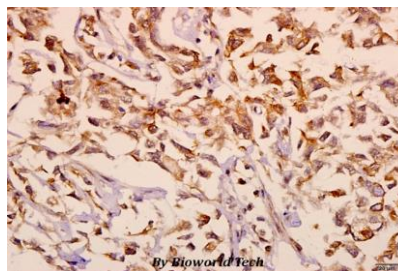
Storage&Stability:

Store at 4 °C short term. Aliquot and store at -20 °C long term. Avoid freeze-thaw cycles.

Specificity:

mGluR-2/3 (N867) polyclonal antibody detects endogenous levels of mGluR-2 and mGluR-3 protein

DATA:



Immunohistochemistry (IHC) analyzes of mGluR-2/3 (N867)pAb in paraffin-embedded human breast carcinoma tissue at 1:50.

Note:

For research use only, not for use in diagnostic procedure.

Bioworld Technology, Inc.

Add: 1660 South Highway 100, Suite 500 St. Louis Park, MN 55416, USA.

Email: info@bioworld.com

Tel: 6123263284

Fax: 6122933841

Bioworld technology, co. Ltd.

Add: No 9, weidi road Qixia District Nanjing, 210046, P. R. China.

Email: info@biogot.com

Tel: 0086-025-68037686

Fax: 0086-025-68035151