

**BMP-5 (L163) polyclonal antibody**

Catalog: BS3455

Host: Rabbit

Reactivity: Human

**BackGround:**

Growth factor of the TGF-beta superfamily that plays essential roles in many developmental processes, including cartilage and bone formation or neurogenesis. Initiates the canonical BMP signaling cascade by associating with type I receptor BMPRI1 and type II receptor BMPRII. In turn, BMPRI1 propagates signal by phosphorylating SMAD1/5/8 that travel to the nucleus and act as activators and repressors of transcription of target genes. Can also signal through non-canonical pathway such as MAPK p38 signaling cascade to promote chondrogenic differentiation.

**Product:**

Rabbit IgG, 1mg/ml in PBS with 0.02% sodium azide, 50% glycerol, pH7.2.

**Molecular Weight:**

~ 53 kDa

**Swiss-Prot:**

P22003

**Purification&Purity:**

The antibody was affinity-purified from rabbit antiserum by affinity-chromatography using epitope-specific immunogen and the purity is > 95% (by SDS-PAGE).

**Applications:**

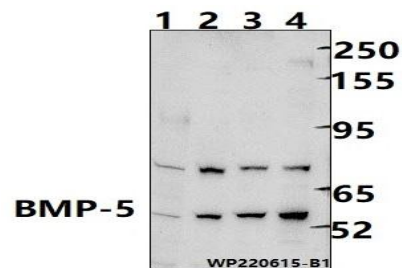
WB: 1:2000~1:5000

**Storage&Stability:**

Store at 4 °C short term. Aliquot and store at -20 °C long term. Avoid freeze-thaw cycles.

**Specificity:**

BMP-5 (L163) polyclonal antibody detects endogenous levels of BMP-5 protein.

**DATA:**

Western blot (WB) analysis of BMP-5 (L163) polyclonal antibody at 1:2000 dilution

Lane1: EC9706 whole cell lysate (30ug)

Lane2: HCT116 whole cell lysate (30ug)

Lane3: A549 whole cell lysate (30ug)

Lane4: HEK293T whole cell lysate (30ug)

**Note:**

For research use only, not for use in diagnostic procedure.

**Bioworld Technology, Inc.**

Add: 1660 South Highway 100, Suite 500 St. Louis Park, MN 55416, USA.

Email: [info@bioworld.com](mailto:info@bioworld.com)

Tel: 6123263284

Fax: 6122933841

**Bioworld technology, co. Ltd.**

Add: No 9, weidi road Qixia District Nanjing, 210046, P. R. China.

Email: [info@biogot.com](mailto:info@biogot.com)

Tel: 0086-025-68037686

Fax: 0086-025-68035151