

Nephrin (H892) polyclonal antibody

Catalog: BS3462

Host: Rabbit

Reactivity: Human, Mouse, Rat

BackGround:

Nephrin is a member of the immunoglobulin family of cell adhesion molecules that localizes to opposing sites of the secondary foot processes formed by podocytes, a specialized epithelial cell that ensures size- and charge-selective ultrafiltration. The human nephrin gene maps to chromosome 19q13.1 and encodes a 1,241 amino acid protein that contains a transmembrane domain, 8 Ig-like modules, and 1 fibronectin III-like module. Nephrin is expressed in embryonic and adult kidneys and localizes to glomerular podocytes and the glomerular slit diaphragm. Nephrin stimulates mitogen-activated protein kinases and is enhanced by podocin, which binds to the cytoplasmic tail of nephrin.

Product:

Rabbit IgG, 1mg/ml in PBS with 0.02% sodium azide, 50% glycerol, pH7.2

Molecular Weight:

~ 135 kDa

Swiss-Prot:

O60500

Purification&Purity:

The antibody was affinity-purified from rabbit antiserum by affinity-chromatography using epitope-specific immunogen and the purity is > 95% (by SDS-PAGE).

Applications:

WB: 1:500~1:1000

IHC: 1:50~1:200

IF: 1:100~1:500

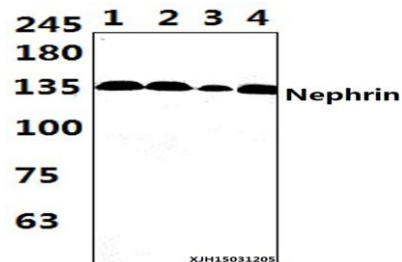
Storage&Stability:

Store at 4 °C short term. Aliquot and store at -20 °C long term. Avoid freeze-thaw cycles.

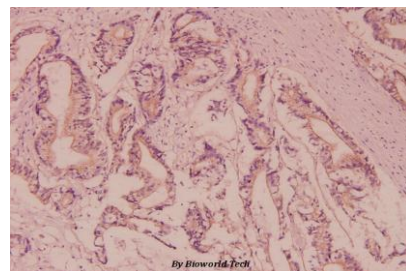
Specificity:

Nephrin (H892) polyclonal antibody detects endogenous levels of Nephrin protein.

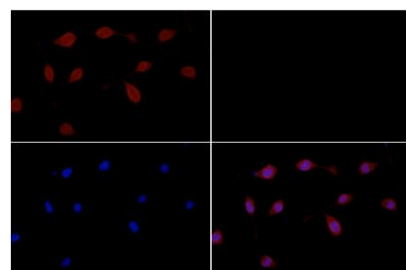
DATA:



Western blot (WB) analysis of Nephrin (H892) polyclonal antibody at 1:1000 dilution
Lane1: The muscle tissue lysate of Rat(47ug)
Lane2: HEK293T whole cell lysate(41ug) Lane3: Jurkat whole cell lysate(41ug)
Lane4: H9C2 whole cell lysate(60ug)



Immunohistochemistry (IHC) analyzes of Nephrin (H892) pAb in paraffin-embedded human colorectal cancer carcinoma tissue at 1:100.



Immunofluorescence analysis of BV2 cells using Nephrin (H892) pAb at dilution of 1:200 (40x lens).

Note:

For research use only, not for use in diagnostic procedure.

Bioworld Technology, Inc.

Add: 1660 South Highway 100, Suite 500 St. Louis Park, MN 55416, USA.

Email: info@bioworld.com

Tel: 6123263284

Fax: 6122933841

Bioworld technology, co. Ltd.

Add: No 9, weidi road Qixia District Nanjing, 210046, P. R. China.

Email: info@biogot.com

Tel: 0086-025-68037686

Fax: 0086-025-68035151



PRODUCT DATA SHEET

Bioworld Biotech Co., Ltd

Bioworld Technology, Inc.

Add: 1660 South Highway 100, Suite 500 St. Louis Park,
MN 55416, USA.

Email: info@bioworld.com

Tel: 6123263284

Fax: 6122933841

Bioworld technology, co. Ltd.

Add: No 9, weidi road Qixia District Nanjing, 210046,
P. R. China.

Email: info@biogot.com

Tel: 0086-025-68037686

Fax: 0086-025-68035151