

IL-12B (V277) polyclonal antibody

Catalog: BS3480

Host: Rabbit

Reactivity: Human, Mouse, Rat

Background:

IL-12 is secreted by macrophages and human B-lymphoblastoid cells in response to antigenic stimulation. This IL is responsible for the differentiation of naive CD4⁺ T cells into type 1 helper T cells that produce interferon- γ (IFN- γ). It also activates production of tumor necrosis factor α (TNF α) from T and natural killer (NK) cells, and it inhibits IL-4 mediated suppression of IFN- γ . IL-12 also has anti-angiogenic activity since the production of IFN- γ increases the production of inducible protein-10 (IP-10). IL-12 p40 represents a subunit of IL-12 that is induced by several pathogens. IL-12 p70 is a subunit of IL-12 that is controlled through both the p35 and p40 genes in a cell type-specific fashion.

Product:

Rabbit IgG, 1mg/ml in PBS with 0.02% sodium azide, 50% glycerol, pH7.2

Molecular Weight:

~ 37 kDa

Swiss-Prot:

P29460

Purification&Purity:

The antibody was affinity-purified from rabbit antiserum by affinity-chromatography using epitope-specific immunogen and the purity is > 95% (by SDS-PAGE).

Applications:

WB: 1:500~1:1000

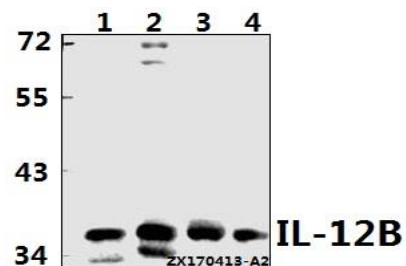
Storage&Stability:

Store at 4 °C short term. Aliquot and store at -20 °C long term. Avoid freeze-thaw cycles.

Specificity:

IL-12B (V277) polyclonal antibody detects endogenous levels of IL-12B protein.

DATA:



Western blot (WB) analysis of IL-12B (V277) polyclonal antibody at 1:500 dilution

Lane1: HeLa whole cell lysate(40ug)

Lane2: K562 whole cell lysate(40ug)

Lane3: CT26 whole cell lysate(40ug)

Lane4: PC12 whole cell lysate(40ug)

Note:

For research use only, not for use in diagnostic procedure.

Bioworld Technology, Inc.

Add: 1660 South Highway 100, Suite 500 St. Louis Park, MN 55416, USA.

Email: info@bioworld.com

Tel: 6123263284

Fax: 6122933841

Bioworld technology, co. Ltd.

Add: No 9, weidi road Qixia District Nanjing, 210046, P. R. China.

Email: info@biogot.com

Tel: 0086-025-68037686

Fax: 0086-025-68035151