

TLR4 (S441) polyclonal antibody

Catalog: BS3489

Host: Rabbit

Reactivity: Human, Mouse, Rat

BackGround:

Toll like receptors (TLR) are highly conserved throughout evolution and have been implicated in the innate defense to many pathogens. In *Drosophila* toll is required for the anti fungal response, while the related 18 wheeler is involved in antibacterial defenses. In mammals, TLR identified as type I transmembrane signaling receptors with pattern recognition capabilities have been implicated in the innate host defense to pathogens. TLR4 has been identified next to MD2 and CD14 as a receptor that is central to the innate immune response to lipopolysaccharides (LPS) of Gram negative bacteria.

Product:

Rabbit IgG, 1mg/ml in PBS with 0.02% sodium azide, 50% glycerol, pH7.2

Molecular Weight:

~ 120 kDa

Swiss-Prot:

O00206

Purification&Purity:

The antibody was affinity-purified from rabbit antiserum by affinity-chromatography using epitope-specific immunogen and the purity is > 95% (by SDS-PAGE).

Applications:

WB 1:500 - 1:2000

IHC 1:100 - 1:200

IF 1:50 - 1:200

IP 1:50 - 1:200

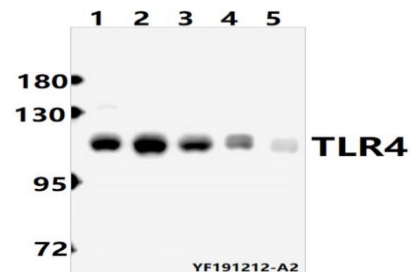
Storage&Stability:

Store at 4 °C short term. Aliquot and store at -20 °C long term. Avoid freeze-thaw cycles.

Specificity:

TLR4 (S441) polyclonal antibody detects endogenous levels of TLR4 protein.

DATA:



Western blot (WB) analysis of TLR4 (S441) pAb at 1:500 dilution

Lane1:HCT116 whole cell lysate(40ug)

Lane2:HEK293T whole cell lysate(40ug)

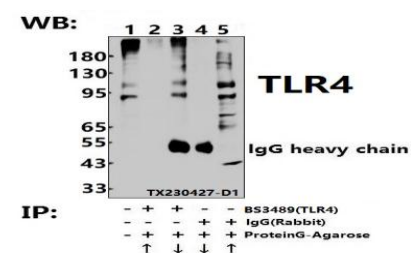
Lane3:Myla2059 whole cell lysate(40ug)

Lane4:Jurkat whole cell lysate(40ug)

Lane5:MCF-7 whole cell lysate (40ug)



Immunohistochemistry (IHC) analyzes of TLR4 (S441) pAb in paraffin-embedded human brain tissue.



Immunoprecipitation of MCF-7 cell lysates using TLR4 (S441) pAb (Sepharose Bead Conjugate)#BD0048 (lane 2 and lane 3) and Nonspecific IgG Control (Sepharose Bead Conjugate)#BD0048 (lane 4 and lane 5). Lane 1 is 30% input. The western blot was probed using TLR4 (S441) pAb #BS3489.

Note:

For research use only, not for use in diagnostic procedure.

Bioworld Technology, Inc.

Add: 1660 South Highway 100, Suite 500 St. Louis Park, MN 55416, USA.

Email: info@bioworld.com

Tel: 6123263284

Fax: 6122933841

Bioworld technology, co. Ltd.

Add: No 9, weidi road Qixia District Nanjing, 210046, P. R. China.

Email: info@biogot.com

Tel: 0086-025-68037686

Fax: 0086-025-68035151



PRODUCT DATA SHEET

Bioworld Technology, Inc.

Bioworld Technology, Inc.

Add: 1660 South Highway 100, Suite 500 St. Louis Park,
MN 55416, USA.

Email: info@bioworld.com

Tel: 6123263284

Fax: 6122933841

Bioworld technology, co. Ltd.

Add: No 9, weidi road Qixia District Nanjing, 210046,
P. R. China.

Email: info@biogot.com

Tel: 0086-025-68037686

Fax: 0086-025-68035151