

PAI-1 (N315) polyclonal antibody

Catalog: BS3503

Host: Rabbit

Reactivity: Human, Mouse, Rat

BackGround:

PAI1 (plasminogen activator inhibitor 1) is originally cloned from human endothelial cell (Pannekoek 1986, Ginsburg 1986) and rat hepatoma cell 3 cDNA libraries. As a member of the serpin family of serine protease inhibitors, PAI1 inhibits both tissue type plasminogen activator (tPA) and urokinase type plasminogen activator (uPA). High PAI1 levels are associated with an increased risk of thromboembolic disease while PAI1 deficiency may represent an inherited autosomal recessive bleeding disorder.

Product:

1 mg/ml in Phosphate buffered saline (PBS) with 0.05% sodium azide, approx. pH 7.2.

Molecular Weight:

~ 37 kDa

Swiss-Prot:

P05121

Purification&Purity:

The antibody was affinity-purified from rabbit antiserum by affinity-chromatography using epitope-specific immunogen and the purity is > 95% (by SDS-PAGE).

Applications:

WB: 1:500~1:1000

IHC: 1:50~1:200

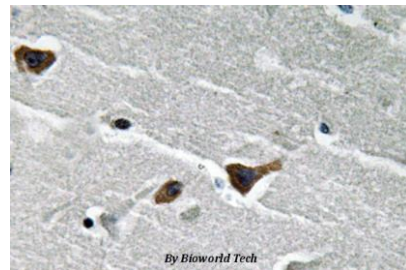
Storage&Stability:

Store at 4 °C short term. Aliquot and store at -20 °C long term. Avoid freeze-thaw cycles.

Specificity:

PAI-1 (N315) polyclonal antibody detects endogenous levels of PAI-1 protein.

DATA:



Immunohistochemistry (IHC) analyzes of PAI-1 (N315) pAb in paraffin-embedded human brain tissue.

Note:

For research use only, not for use in diagnostic procedure.

Bioworld Technology, Inc.

Add: 1660 South Highway 100, Suite 500 St. Louis Park, MN 55416, USA.

Email: info@bioworld.com

Tel: 6123263284

Fax: 6122933841

Bioworld technology, co. Ltd.

Add: No 9, weidi road Qixia District Nanjing, 210046, P. R. China.

Email: info@biogot.com

Tel: 0086-025-68037686

Fax: 0086-025-68035151