

Cathepsin H (Y205) polyclonal antibody

Catalog: BS3530

Host: Rabbit

Reactivity: Human, Mouse, Rat

BackGround:

The cathepsin family of proteolytic enzymes contains several diverse classes of proteases. The cysteine protease class comprises cathepsins B, L, H, K, S, and O. The aspartyl protease class is composed of cathepsins D and E. Cathepsin G is in the serine protease class. Most cathepsins are lysosomal and each is involved in various cellular events such as peptide biosynthesis and protein degradation. The propeptide region of cathepsin H is highly homologous to other cathepsins. This region is thought to play a role in the processing of cysteine proteases. Cathepsin H is thought to be involved in several pathological conditions, including neuro degenerative disorders and cancer.

Product:

Rabbit IgG, 1mg/ml in PBS with 0.02% sodium azide, 50% glycerol, pH7.2

Molecular Weight:

~ 25, 37 kDa

Swiss-Prot:

P09668

Purification&Purity:

The antibody was affinity-purified from rabbit antiserum by affinity-chromatography using epitope-specific immunogen and the purity is > 95% (by SDS-PAGE).

Applications:

IHC:1:50~1:200

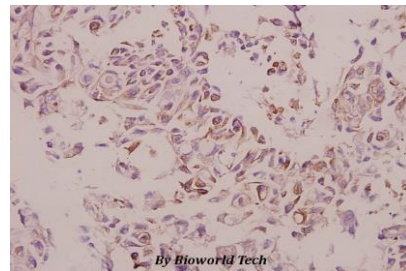
Storage&Stability:

Store at 4 °C short term. Aliquot and store at -20 °C long term. Avoid freeze-thaw cycles.

Specificity:

Cathepsin H (Y205) polyclonal antibody detects endogenous levels of Cathepsin H protein.

DATA:



Immunohistochemistry (IHC) analyzes of Cathepsin H (Y205) pAb in paraffin-embedded human colorectal carcinoma tissue at 1:50.

Note:

For research use only, not for use in diagnostic procedure.

Bioworld Technology, Inc.

Add: 1660 South Highway 100, Suite 500 St. Louis Park, MN 55416, USA.

Email: info@bioworld.com

Tel: 6123263284

Fax: 6122933841

Bioworld technology, co. Ltd.

Add: No 9, weidi road Qixia District Nanjing, 210046, P. R. China.

Email: info@biogot.com

Tel: 0086-025-68037686

Fax: 0086-025-68035151