

MIP-1 α (D75) polyclonal antibody

Catalog: BS3543

Host: Rabbit

Reactivity: Human, Mouse, Rat

BackGround:

Macrophage Inflammatory Protein 1 alpha (MIP1 alpha) and MIP1 beta, two closely related but distinct proteins, were originally co-purified from medium conditioned by a LPS-stimulated murine macrophage cell line. Mature mouse MIP1 alpha shares approximately 77% and 70% amino acid identity with human MIP1 alpha and mouse MIP1 beta, respectively. MIP1 proteins are expressed primarily in T cells, B cells, and monocytes after antigen or mitogen stimulation. Has adhesive effects on lymphocytes. MIP1 alpha can inhibit the proliferation of hematopoietic stem cells in vitro as well as in vivo. A signal transducing receptor, designated the C-C chemokine receptor-1 (C-C CKR-1) with seven transmembrane domains that bind MIP1 alpha, MIP1 beta, MCP1 and RANTES with varying affinities, has been isolated.

Product:

Rabbit IgG, 1mg/ml in PBS with 0.02% sodium azide, 50% glycerol, pH7.2

Molecular Weight:

~ 10 kDa

Swiss-Prot:

P10147

Purification&Purity:

The antibody was affinity-purified from rabbit antiserum by affinity-chromatography using epitope-specific im-

munogen and the purity is > 95% (by SDS-PAGE).

Applications:

IHC:1:50~1:200

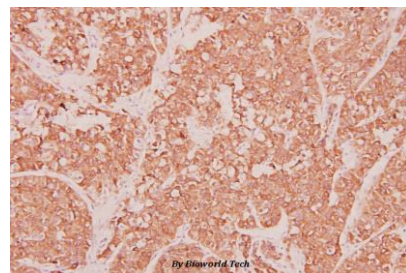
Storage&Stability:

Store at 4 °C short term. Aliquot and store at -20 °C long term. Avoid freeze-thaw cycles.

Specificity:

MIP-1 α (D75) polyclonal antibody detects endogenous levels of MIP-1 α protein.

DATA:



Immunohistochemistry (IHC) analyzes of MIP-1 α (D75) pAb in paraffin-embedded human liver carcinoma tissue at 1:100.

Note:

For research use only, not for use in diagnostic procedure.

Bioworld Technology, Inc.

Add: 1660 South Highway 100, Suite 500 St. Louis Park, MN 55416, USA.

Email: info@bioworld.com

Tel: 6123263284

Fax: 6122933841

Bioworld technology, co. Ltd.

Add: No 9, weidi road Qixia District Nanjing, 210046, P. R. China.

Email: info@biogot.com

Tel: 0086-025-68037686

Fax: 0086-025-68035151