

## Na<sup>+</sup> CP type II $\alpha$ (K1032) polyclonal antibody

Catalog: BS3562

Host: Rabbit

Reactivity: Human, Mouse, Rat

### BackGround:

Voltage-gated sodium channels are selective ion channels that regulate the permeability of sodium ions in excitable cells. During the propagation of an action potential, sodium channels allow an influx of sodium ions, which rapidly depolarize the cell. The  $\alpha$  subunits of sodium channels type I and III are predominantly expressed in neuronal cell bodies and proximal processes, while type II $\alpha$  subunits are more abundant along axons. The  $\beta$ 1 subunit of sodium channel type I is expressed in brain, skeletal and cardiac muscle. In the brain,  $\beta$ 1 and  $\beta$ 2 are highly expressed in Purkinje cells, and  $\beta$ 1 is also expressed in the pyramidal cells of the deep cerebellar nuclei. Impaired voltage-gated sodium channels lead to a number of diseases including myotonia.

### Product:

Rabbit IgG, 1mg/ml in PBS with 0.02% sodium azide, 50% glycerol, pH7.2

### Molecular Weight:

~ 230-260 kDa

### Swiss-Prot:

Q99250

### Purification&Purity:

The antibody was affinity-purified from rabbit antiserum by affinity-chromatography using epitope-specific immunogen and the purity is > 95% (by SDS-PAGE).

### Applications:

WB: 1:500~1:1000

IHC: 1:50~1:200

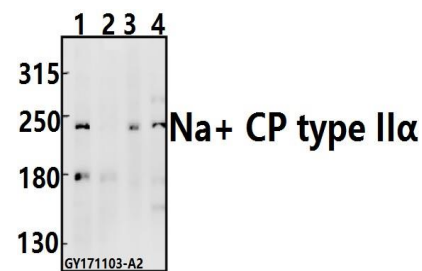
### Storage&Stability:

Store at 4 °C short term. Aliquot and store at -20 °C long term. Avoid freeze-thaw cycles.

### Specificity:

Na<sup>+</sup> CP type II $\alpha$  (K1032) polyclonal antibody detects endogenous levels of Na<sup>+</sup> CP type II $\alpha$  protein.

### DATA:



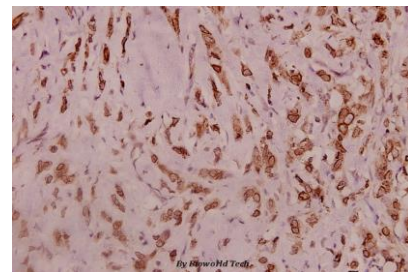
Western blot (WB) analysis of Na<sup>+</sup> CP type II $\alpha$  (K1032) pAb at 1:1000 dilution

Lane1:HEK293T whole cell lysate(40ug)

Lane2:A549 whole cell lysate(40ug)

Lane3:C6 whole cell lysate(40ug)

Lane4:CT26 whole cell lysate(40ug)



Immunohistochemistry (IHC) analyzes of Na<sup>+</sup> CP type II $\alpha$  (K1032) pAb in paraffin-embedded human breast carcinoma tissue at 1:100.

### Note:

For research use only, not for use in diagnostic procedure.

### Bioworld Technology, Inc.

Add: 1660 South Highway 100, Suite 500 St. Louis Park, MN 55416, USA.

Email: [info@bioworld.com](mailto:info@bioworld.com)

Tel: 6123263284

Fax: 6122933841

### Bioworld technology, co. Ltd.

Add: No 9, weidi road Qixia District Nanjing, 210046, P. R. China.

Email: [info@biogot.com](mailto:info@biogot.com)

Tel: 0086-025-68037686

Fax: 0086-025-68035151