

## GABAA R $\alpha$ 1 (L361) polyclonal antibody

Catalog: BS3563

Host: Rabbit

Reactivity: Human, Mouse, Rat

### BackGround:

GABA has been shown to activate both ionotropic (GABAA) and metabotropic (GABAB) receptors as well as a third class of receptors called GABAC. Both GABAA and GABAC are ligand-gated ion channels, however, they are structurally and functionally distinct. Members of the GABAA receptor family include GABAA R $\alpha$ 1-6, GABAA R  $\beta$ 1-3, GABAA R $\gamma$ 1-3, GABAA R $\delta$ , GABAA R $\epsilon$ , GABAA R $\rho$ 1 and GABAA R $\rho$ 2. The GABAB family is composed of GABAB R1 $\alpha$  and GABAB R1 $\beta$ . GABA transporters have also been identified and include GABA T-1, GABA T-2 and GABA T-3 (also designated GAT-1, -2, and -3). The GABA transporters function to terminate GABA action.

### Product:

Rabbit IgG, 1mg/ml in PBS with 0.02% sodium azide, 50% glycerol, pH7.2

### Molecular Weight:

~ 52 kDa

### Swiss-Prot:

P14867

### Purification&Purity:

The antibody was affinity-purified from rabbit antiserum by affinity-chromatography using epitope-specific immunogen and the purity is > 95% (by SDS-PAGE).

### Applications:

IHC:1:50~1:200

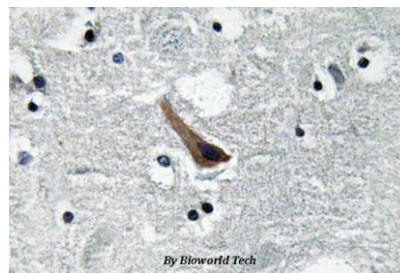
### Storage&Stability:

Store at 4 °C short term. Aliquot and store at -20 °C long term. Avoid freeze-thaw cycles.

### Specificity:

GABAA R $\alpha$ 1 (L361) polyclonal antibody detects endogenous levels of GABAA R $\alpha$ 1 protein.

### DATA:



Immunohistochemistry (IHC) analyzes of GABAA R $\alpha$ 1 (L361) pAb in paraffin-embedded human brain tissue.

### Note:

For research use only, not for use in diagnostic procedure.

### Bioworld Technology, Inc.

Add: 1660 South Highway 100, Suite 500 St. Louis Park, MN 55416, USA.

Email: [info@bioworld.com](mailto:info@bioworld.com)

Tel: 6123263284

Fax: 6122933841

### Bioworld technology, co. Ltd.

Add: No 9, weidi road Qixia District Nanjing, 210046, P. R. China.

Email: [info@biogot.com](mailto:info@biogot.com)

Tel: 0086-025-68037686

Fax: 0086-025-68035151