

PKC θ (N670) polyclonal antibody

Catalog: BS3666

Host: Rabbit

Reactivity: Human, Mouse, Rat

Background:

Members of the protein kinase C (PKC) family play a key regulatory role in variety of cellular functions including cell growth and differentiation, gene expression, hormone secretion and membrane function. PKCs were originally identified as serine/threonine protein kinases whose activity was dependent on calcium and phospholipids. Diacylglycerols (DAG) and tumor promoting phorbol esters bind to and activate PKC. PKCs can be subdivided into at least two major classes including conventional (c) PKC isoforms (α , β I, β II and γ) and novel (n) PKC isoforms (δ , ϵ , ζ , η and θ). Patterns of expression for each PKC isoform differs among tissues and PKC family members exhibit clear differences in their cofactor dependencies. For instance, the kinase activities of nPKC δ and ϵ are independent of Ca^{++} . On the other hand, nPKC and ϵ , as well as all of the cPKC members, possess phorbol ester-binding activities and kinase activities.

Product:

1 mg/ml in Phosphate buffered saline (PBS) with 15 mM sodium azide, approx. pH 7.2.

Molecular Weight:

~ 80 kDa

Swiss-Prot:

Q04759

Purification&Purity:

The antibody was affinity-purified from rabbit antiserum by affinity-chromatography using epitope-specific immunogen and the purity is > 95% (by SDS-PAGE).

Applications:

WB: 1:500~1:1000

IHC: 1:50~1:200

IF: 1:50~1:200

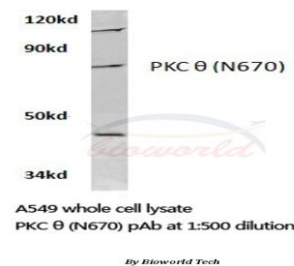
Storage&Stability:

Store at 4 °C short term. Aliquot and store at -20 °C long term. Avoid freeze-thaw cycles.

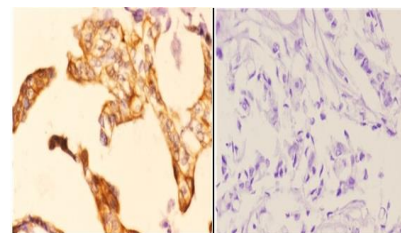
Specificity:

PKC θ (N670) polyclonal antibody detects endogenous levels of PKC θ protein.

DATA:

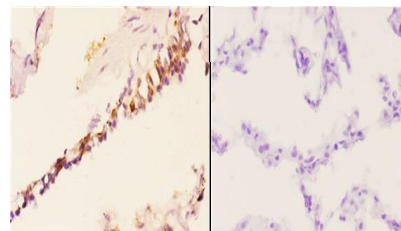


Western blot (WB) analyzes of PKC θ (N670) polyclonal antibody in extracts from A549 cells.



BS3666
Lot CA36131

Immunohistochemistry (IHC) analyzes of PKC θ (N670) pAb in paraffin-embedded human breast carcinoma tissue at 1:50, showing cytoplasmic and nuclear and membrane staining. Negative control (the right) Using PBS instead of primary antibody, secondary antibody is Goat Anti-Rabbit IgG-biotin followed by avidin-peroxidase.



BS3666
Lot CA36131

Immunohistochemistry (IHC) analyzes of PKC θ (N670) pAb in paraffin-embedded human lung carcinoma tissue at 1:50, showing cytoplasmic and nuclear and membrane staining. Negative control (the right) Using PBS instead of primary antibody, secondary antibody is

Bioworld Technology, Inc.

Add: 1660 South Highway 100, Suite 500 St. Louis Park, MN 55416, USA.

Email: info@bioworld.com

Tel: 6123263284

Fax: 6122933841

Bioworld technology, co. Ltd.

Add: No 9, weidi road Qixia District Nanjing, 210046, P. R. China.

Email: info@biogot.com

Tel: 0086-025-68037686

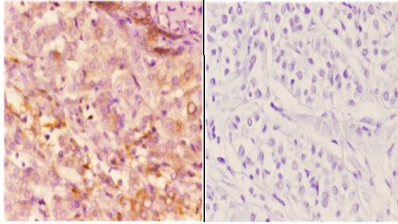
Fax: 0086-025-68035151



PRODUCT DATA SHEET

Bioworld Technology, Inc.

Goat Anti-Rabbit IgG-biotin followed by avidin-peroxidase.



BS3666
Lot CA36131

Immunohistochemistry (IHC) analyzes of PKC θ (N670) pAb in paraffin-embedded human liver carcinoma tissue at 1:50, showing cytoplasmic and nuclear and membrane staining. Negative control (the

right) Using PBS instead of primary antibody, secondary antibody is

Goat Anti-Rabbit IgG-biotin followed by avidin-peroxidase.

Note:

For research use only, not for use in diagnostic procedure.

Bioworld Technology, Inc.

Add: 1660 South Highway 100, Suite 500 St. Louis Park,
MN 55416, USA.

Email: info@bioworld.com

Tel: 6123263284

Fax: 6122933841

Bioworld technology, co. Ltd.

Add: No 9, weidi road Qixia District Nanjing, 210046,
P. R. China.

Email: info@biogot.com

Tel: 0086-025-68037686

Fax: 0086-025-68035151