

## C1s (K583) polyclonal antibody

Catalog: BS3839

Host: Rabbit

Reactivity: Human, Mouse, Rat

### BackGround:

C1s proenzyme is a glycoprotein produced primarily by hepatocytes but also by other cells. The proenzyme is produced as a single chain polypeptide of 688 aa. Upon activation the peptide is cleaved between R437 and I438 giving the activated enzyme consisting of two disulfide-linked chains, A chain (52.2 kDa) and B chain (27.7 kDa). The Ca dependent catalytic subunit of the C1 complex (C1q, C1r, C1s) comprises of two C1s and two C1r molecules and this serine protease tetramer is responsible for the initial steps in the classical complement pathway, cleavage of C4 and C2.

### Product:

Rabbit IgG, 1mg/ml in PBS with 0.02% sodium azide, 50% glycerol, pH7.2

### Molecular Weight:

~ 90 kDa

### Swiss-Prot:

P09871

### Purification&Purity:

The antibody was affinity-purified from rabbit antiserum by affinity-chromatography using epitope-specific immunogen and the purity is > 95% (by SDS-PAGE).

### Applications:

WB: 1:500~1:1000

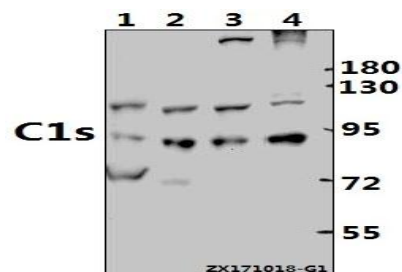
### Storage&Stability:

Store at 4 °C short term. Aliquot and store at -20 °C long term. Avoid freeze-thaw cycles.

### Specificity:

C1s (K583) polyclonal antibody detects endogenous levels of C1s protein.

### DATA:



Western blot (WB) analysis of C1s (K583) pAb at 1:500 dilution

Lane1: AML-12 whole cell lysate(40ug)

Lane2: PC12 whole cell lysate(40ug)

Lane3: HepG2 whole cell lysate(40ug)

Lane4: SK-OVCAR3 whole cell lysate(40ug)

### Note:

For research use only, not for use in diagnostic procedure.

### Bioworld Technology, Inc.

Add: 1660 South Highway 100, Suite 500 St. Louis Park, MN 55416, USA.

Email: [info@bioworld.com](mailto:info@bioworld.com)

Tel: 6123263284

Fax: 6122933841

### Bioworld technology, co. Ltd.

Add: No 9, weidi road Qixia District Nanjing, 210046, P. R. China.

Email: [info@biogot.com](mailto:info@biogot.com)

Tel: 0086-025-68037686

Fax: 0086-025-68035151