

POLR2J1 (D24) polyclonal antibody

Catalog: BS3853

Host: Rabbit

Reactivity: Mouse,Rat

BackGround:

Three genes (POLR2 J1, POLR2 J2, and POLR2 J3) form a cluster of total length of 214 530 bp in the genetic locus 7q22.1 on the long arm of chromosome 7 (contig NT_007933). The fourth gene (POLR2 J4, 31 040 bp) was localized in the cytogenetic locus 7p13 of the short arm of chromosome 7 (contig NT_007819). An analysis enabled us to refine dissimilar experimental data on the mapping of the hRPB11 subunit gene on chromosome 7. In particular, the presence of three sites of its localization according to data on hybridization with fluorescent-labeled probes (the FISH method) was explained. It was established that, upon the expression of the four human POLR2 J genes, at least 14 types of mature mRNAs encoding somewhat differing hRPB11 isoforms can be synthesized. Eleven of these mRNAs were revealed (as full-length copies or clearly identifiable fragments) in the available databases of expressed sequence tags and cDNAs. The most probable scheme of origination of the multiple genes of the POLR2 J family as a result of three consecutive segmented duplications increasing in size was proposed and substantiated. On the basis of the scheme, some assumptions on the pathways of evolution of separate human genes and the mechanisms of generation of protein diversity in higher eukaryotes were made

Product:

1 mg/ml in Phosphate buffered saline (PBS) with 0.05% sodium azide, approx. pH 7.2.

Molecular Weight:

~ 13 kDa

Swiss-Prot:

P52435

Purification&Purity:

The antibody was affinity-purified from rabbit antiserum by affinity-chromatography using epitope-specific immunogen and the purity is > 95% (by SDS-PAGE).

Applications:

WB: 1:500~1:1000

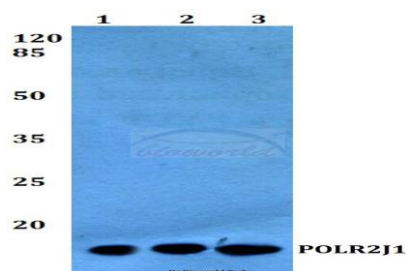
Storage&Stability:

Store at 4 °C short term. Aliquot and store at -20 °C long term. Avoid freeze-thaw cycles.

Specificity:

POLR2J1 (D24) polyclonal antibody detects endogenous levels of POLR2J1 protein.

DATA:



Western blot (WB) analysis of POLR2J1 (D24) polyclonal antibody at 1:500 dilution

Lane1:CT26 whole cell lysate(40ug)

Lane2:PC12 whole cell lysate(40ug)

Note:

For research use only, not for use in diagnostic procedure.

Bioworld Technology, Inc.

Add: 1660 South Highway 100, Suite 500 St. Louis Park, MN 55416, USA.

Email: info@bioworld.com

Tel: 6123263284

Fax: 6122933841

Bioworld technology, co. Ltd.

Add: No 9, weidi road Qixia District Nanjing, 210046, P. R. China.

Email: info@biogot.com

Tel: 0086-025-68037686

Fax: 0086-025-68035151