

## FR- $\alpha$ (Y80) polyclonal antibody

Catalog: BS3861

Host: Rabbit

Reactivity: Human, Mouse, Rat

### BackGround:

The folate receptors consist of five members,  $\alpha$ ,  $\beta$ ,  $\gamma$ ,  $\gamma'$  (which is produced by alternative splicing) and  $\delta$ .  $\beta$ -FR is attached to the membrane by a GPI anchor and is expressed in malignant tissues of epithelial and nonepithelial origin.  $\gamma$ -FR is expressed in tissues of hematopoietic origin, such as spleen, thymus and bone marrow. The expression pattern of  $\delta$ -FR is elusive, which suggests that it is highly restricted both spatially and temporally. The  $\alpha$  isoform of the folate receptor is used as a highly selective tumor marker and may be targeted for the delivery of therapeutic compounds to tumor cells by coupling to derivatives of folic acid.

### Product:

1 mg/ml in Phosphate buffered saline (PBS) with 0.05% sodium azide, approx. pH 7.2.

### Molecular Weight:

~ 34 kDa

### Swiss-Prot:

P15328

### Purification&Purity:

The antibody was affinity-purified from rabbit antiserum by affinity-chromatography using epitope-specific immunogen and the purity is > 95% (by SDS-PAGE).

### Applications:

WB: 1:500~1:1000

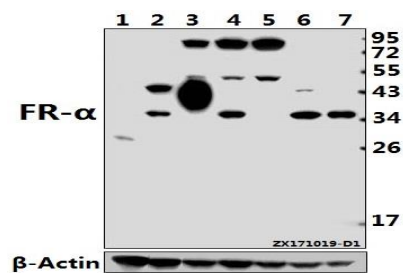
### Storage&Stability:

Store at 4 °C short term. Aliquot and store at -20 °C long term. Avoid freeze-thaw cycles.

### Specificity:

FR- $\alpha$  (Y80) polyclonal antibody detects endogenous levels of FR- $\alpha$  (Y80) protein.

### DATA:



Western blot (WB) analysis of FR- $\alpha$  (Y80) pAb at 1:2000 dilution

Lane1: The Uterus tissue lysate of Mouse(40ug)

Lane2: AML-12 whole cell lysate(40ug)

Lane3: MCF-7 whole cell lysate(40ug)

Lane4: HepG2 whole cell lysate(40ug)

Lane5: HEK293T whole cell lysate(40ug)

Lane6: PC12 whole cell lysate(40ug)

Lane7: HeLa whole cell lysate(20ug)

### Note:

For research use only, not for use in diagnostic procedure.

### Bioworld Technology, Inc.

Add: 1660 South Highway 100, Suite 500 St. Louis Park, MN 55416, USA.

Email: [info@bioworld.com](mailto:info@bioworld.com)

Tel: 6123263284

Fax: 6122933841

### Bioworld technology, co. Ltd.

Add: No 9, weidi road Qixia District Nanjing, 210046, P. R. China.

Email: [info@biogot.com](mailto:info@biogot.com)

Tel: 0086-025-68037686

Fax: 0086-025-68035151