

## Malic enzyme 1 (Y500) polyclonal antibody

Catalog: BS3886

Host: Rabbit

Reactivity: Human, Mouse, Rat

### BackGround:

ME1 (Malic enzyme 1), also known as NADP-ME, MES or HUMNDME, is a 572 amino acid cytoplasmic protein that belongs to the malic enzyme family. Expressed ubiquitously with highest expression in liver and white adipose tissue, ME1 functions as an NADP-dependent enzyme that catalyzes the conversion of S-malate and NADP to pyruvate, carbon dioxide and NADPH (a reducing agent that participates in fatty acid biosynthesis). Through its ability to catalyze the reversible oxidative decarboxylation of malate, ME1 links the citric acid and glycolytic cycles. ME1 exists as a homotetramer that uses divalent metal cations, such as magnesium or manganese, as cofactors. The expression of ME1 is regulated by both thyroid hormone levels and the amount of carbohydrates in the diet, indicating that ME1 may play an important role as a housekeeping protein within the cell.

### Product:

Rabbit IgG, 1mg/ml in PBS with 0.02% sodium azide, 50% glycerol, pH7.2

### Molecular Weight:

~ 64 kDa

### Swiss-Prot:

P48163

### Purification&Purity:

The antibody was affinity-purified from rabbit antiserum by affinity-chromatography using epitope-specific immunogen and the purity is > 95% (by SDS-PAGE).

### Applications:

WB: 1:500~1:1000

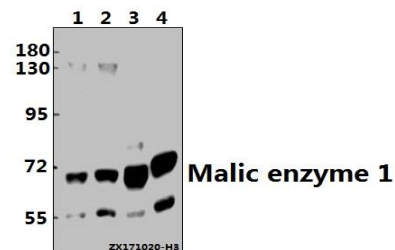
### Storage&Stability:

Store at 4 °C short term. Aliquot and store at -20 °C long term. Avoid freeze-thaw cycles.

### Specificity:

Malic enzyme 1 (Y500) polyclonal antibody detects endogenous levels of Malic enzyme 1 protein.

### DATA:



Western blot (WB) analysis of Malic enzyme 1 (Y500) pAb at 1:2000 dilution

Lane1:H1792 whole cell lysate(10ug)

Lane2:HepG2 whole cell lysate(10ug)

Lane3:The Testis tissue lysate of Mouse(10ug)

Lane4:The Testis tissue lysate of Rat(10ug)

### Note:

For research use only, not for use in diagnostic procedure.

### Bioworld Technology, Inc.

Add: 1660 South Highway 100, Suite 500 St. Louis Park, MN 55416, USA.

Email: [info@bioworld.com](mailto:info@bioworld.com)

Tel: 6123263284

Fax: 6122933841

### Bioworld technology, co. Ltd.

Add: No 9, weidi road Qixia District Nanjing, 210046, P. R. China.

Email: [info@biogot.com](mailto:info@biogot.com)

Tel: 0086-025-68037686

Fax: 0086-025-68035151