

## Neurexophilin-3 (L190) polyclonal antibody

Catalog: BS3891

Host: Rabbit

Reactivity: Human, Mouse, Rat

### Background:

Neurexophilin-1 (also known as NPH1 or NXPH1), Neurexophilin-2 (also known as NPH2 or NXPH2) and Neurexophilin-3 (also known as NPH3 or NXPH3) are members of the Neurexophilin family (Neurexophilin-1-4) of neuropeptide-like glycoproteins that are proteolytically processed after synthesis. Neurexophilin-1-3 are secreted proteins that are thought to function as signaling molecules which specifically bind to target proteins, such as neurexin I $\alpha$  (a protein that promotes adhesion between dendrites and axons), and are essential for proper neurotransmitter release. While Neurexophilin-1 is located primarily in spleen tissue, Neurexophilin-2 is expressed primarily in kidney and both Neurexophilin-2 and Neurexophilin-3 are highly expressed in brain. Defects in the gene encoding Neurexophilin-1 may be associated with schizophrenia, a mental disorder characterized by an abnormal perception of reality.

### Product:

1 mg/ml in Phosphate buffered saline (PBS) with 0.05% sodium azide, approx. pH 7.2.

### Molecular Weight:

~ 28 kDa

### Swiss-Prot:

O95157

### Purification&Purity:

The antibody was affinity-purified from rabbit antiserum by affinity-chromatography using epitope-specific immunogen and the purity is > 95% (by SDS-PAGE).

### Applications:

WB: 1:500~1:1000

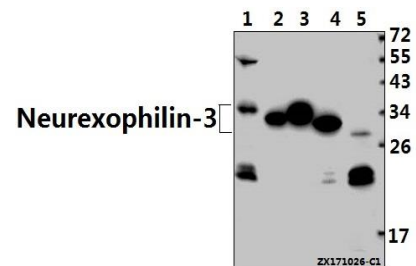
### Storage&Stability:

Store at 4 °C short term. Aliquot and store at -20 °C long term. Avoid freeze-thaw cycles.

### Specificity:

Neurexophilin-3 (L190) polyclonal antibody detects endogenous levels of Neurexophilin-3 protein.

### DATA:



Western blot (WB) analysis of Neurexophilin-3 (L190) pAb at 1:1000 dilution

Lane1:BV2 whole cell lysate(40ug)

Lane2:C6 whole cell lysate(20ug)

Lane3:Hela whole cell lysate(10ug)

Lane4:MCF-7 whole cell lysate(40ug)

Lane5:HEK293T whole cell lysate(40ug)

### Note:

For research use only, not for use in diagnostic procedure.

### Bioworld Technology, Inc.

Add: 1660 South Highway 100, Suite 500 St. Louis Park, MN 55416, USA.

Email: [info@bioworld.com](mailto:info@bioworld.com)

Tel: 6123263284

Fax: 6122933841

### Bioworld technology, co. Ltd.

Add: No 9, weidi road Qixia District Nanjing, 210046, P. R. China.

Email: [info@biogol.com](mailto:info@biogol.com)

Tel: 0086-025-68037686

Fax: 0086-025-68035151