

CD172b (V270) polyclonal antibody

Catalog: BS3947

Host: Rabbit

Reactivity: Human, Mouse, Rat

BackGround:

SIRP beta 1 is a type I transmembrane protein belonging to the SIRP family within the Ig superfamily. Members of this family are characterized by an extracellular region containing a V-set Ig domain with a J-like sequence and two C1-set Ig domains. Unlike SIRP alpha that has cytoplasmic ITIM domains, SIRP beta 1 possesses positively charged residues that allow association with ITAM motif-containing adaptor molecules. SIRP beta 1 is expressed on cells of monocyte, macrophage or dendritic lineages.

Product:

1 mg/ml in Phosphate buffered saline (PBS) with 0.05% sodium azide, approx. pH 7.2.

Molecular Weight:

~ 48 kDa

Swiss-Prot:

O00241

Purification&Purity:

The antibody was affinity-purified from rabbit antiserum by affinity-chromatography using epitope-specific immunogen and the purity is > 95% (by SDS-PAGE).

Applications:

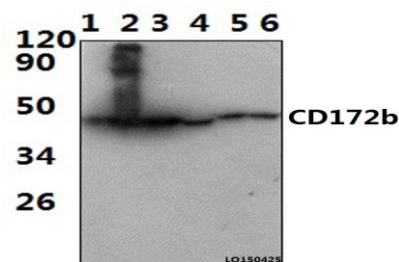
WB: 1:500~1:1000

Storage&Stability:

Store at 4 °C short term. Aliquot and store at -20 °C long term. Avoid freeze-thaw cycles.

Specificity:

CD172b (V270) polyclonal antibody detects endogenous levels of CD172b protein.

DATA:

Western blot (WB) analysis of CD172b (V270) polyclonal antibody at 1:1000 dilution Lane1:HELA whole cell lysate(40ug) Lane2:THP-1 whole cell lysate(57ug) Lane3:JURKAT whole cell lysate(54ug) Lane4:RAW264.7 whole cell lysate(31ug) Lane5:The Peripheral blood cells tissue lysate of Rat(36ug) Lane6:The Peripheral blood cells tissue lysate of Mouse(36ug)

Note:

For research use only, not for use in diagnostic procedure.

Bioworld Technology, Inc.

Add: 1660 South Highway 100, Suite 500 St. Louis Park, MN 55416, USA.

Email: info@bioworld.com

Tel: 6123263284

Fax: 6122933841

Bioworld technology, co. Ltd.

Add: No 9, weidi road Qixia District Nanjing, 210046, P. R. China.

Email: info@biogot.com

Tel: 0086-025-68037686

Fax: 0086-025-68035151