

## CD34 Rabbit monoclonal antibody

Catalog: BS40073

Host: Rabbit

Reactivity: Human Mouse Rat Dog

### BackGround:

Possible adhesion molecule with a role in early hematopoiesis by mediating the attachment of stem cells to the bone marrow extracellular matrix or directly to stromal cells. Could act as a scaffold for the attachment of lineage specific glycans, allowing stem cells to bind to lectins expressed by stromal cells or other marrow components. Presents carbohydrate ligands to selectins.

### Product:

Rabbit IgG, 1mg/ml in PBS with 0.02% sodium azide, 50% glycerol, pH7.2.

### Molecular Weight:

120kDa

### Swiss-Prot:

P28906

### Purification&Purity:

Affinity-chromatography

### Applications:

WB 1:500~1:2000 IHC 1:50~1:200 ICC/IF 1:50~1:200  
IP 1:50 FC 1:50

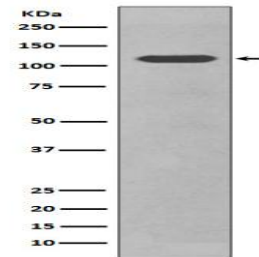
### Storage&Stability:

Store at 4 °C short term. Aliquot and store at -20 °C long term. Avoid freeze-thaw cycles.

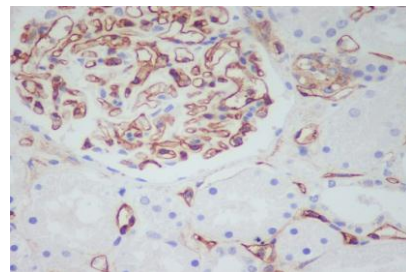
### Specificity:

CD34 Antibody detects endogenous levels of total CD34

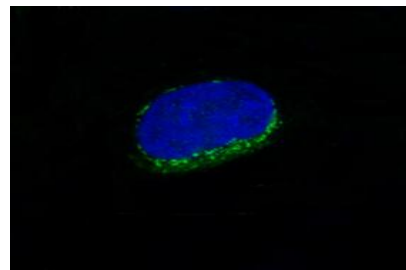
### DATA:



Western blot analysis of CD34 in expression NIH/3T3 cell lysate.



Immunohistochemical analysis of paraffin-embedded human kidney, using CD34 Antibody.



Immunofluorescent analysis of HUVEC cells, using CD34 Antibody .

### Note:

For research use only, not for use in diagnostic procedure.

### Bioworld Technology, Inc.

Add: 1660 South Highway 100, Suite 500 St. Louis Park,  
MN 55416, USA.

Email: [info@bioworld.com](mailto:info@bioworld.com)

Tel: 6123263284

Fax: 6122933841

### Bioworld technology, co. Ltd.

Add: No 9, weidi road Qixia District Nanjing, 210046,  
P. R. China.

Email: [info@biogot.com](mailto:info@biogot.com)

Tel: 0086-025-68037686

Fax: 0086-025-68035151