

KLF4 Rabbit monoclonal antibody

Catalog: BS40412

Host: Rabbit

Reactivity: Human Mouse Rat

BackGround:

KLF4 is a member of the erythroid Kruppel-like factor (EKLF) multigene family that is highly expressed in the differentiating layers of the epidermis. KLF4 plays a critical role in the differentiation of epithelial cells and is essential for normal gastric homeostasis and function as both a repressor and activator of transcription.

Product:

Rabbit IgG, 1mg/ml in PBS with 0.02% sodium azide, 50% glycerol, pH7.2.

Molecular Weight:

54kDa

Swiss-Prot:

O43474

Purification&Purity:

Affinity-chromatography

Applications:

WB 1:500~1:2000 IHC 1:50~1:200 ICC/IF 1:50~1:200

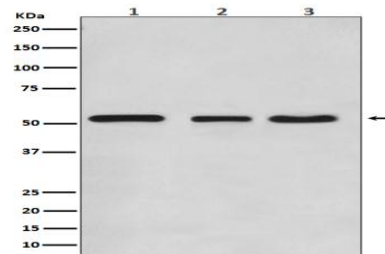
Storage&Stability:

Store at 4 °C short term. Aliquot and store at -20 °C long term. Avoid freeze-thaw cycles.

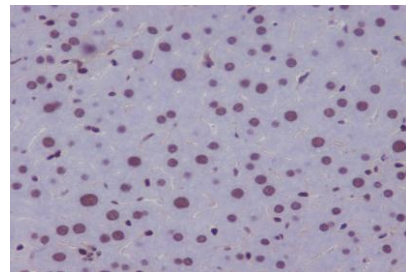
Specificity:

KLF4 Antibody detects endogenous levels of total KLF4

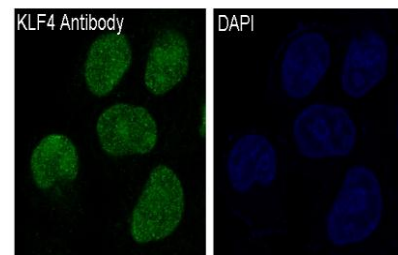
DATA:



Western blot analysis of KLF4 expression in (1) HeLa cell lysate; (2) NIH/3T3 cell lysate; (3) C6 cell lysate.



Immunohistochemical analysis of paraffin-embedded mouse liver, using KLF4 Antibody.



Immunofluorescent analysis of HeLa cells, using KLF4 Antibody.

Note:

For research use only, not for use in diagnostic procedure.

Bioworld Technology, Inc.

Add: 1660 South Highway 100, Suite 500 St. Louis Park, MN 55416, USA.

Email: info@bioworld.com

Tel: 6123263284

Fax: 6122933841

Bioworld technology, co. Ltd.

Add: No 9, weidi road Qixia District Nanjing, 210046, P. R. China.

Email: info@biogot.com

Tel: 0086-025-68037686

Fax: 0086-025-68035151