

CD19 Rabbit monoclonal antibody

Catalog: BS40420

Host: Rabbit

Reactivity: Human

BackGround:

CD19 is a transmembrane glycoprotein that contains two extracellular immunoglobulin-like domains. Assembles with the antigen receptor of B lymphocytes in order to decrease the threshold for antigen receptor-dependent stimulation.

Product:

Rabbit IgG, 1mg/ml in PBS with 0.02% sodium azide, 50% glycerol, pH7.2.

Molecular Weight:

95kDa

Swiss-Prot:

P15391

Purification&Purity:

Affinity-chromatography

Applications:

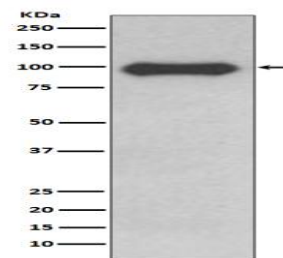
WB 1:500~1:2000 IHC 1:50~1:200 ICC/IF 1:50~1:200

Storage&Stability:

Store at 4 °C short term. Aliquot and store at -20 °C long term. Avoid freeze-thaw cycles.

Specificity:

CD19 Antibody detects endogenous levels of total CD19

DATA:

Western blot analysis of CD19 expression in Ramos cell lysate.

Note:

For research use only, not for use in diagnostic procedure.

Bioworld Technology, Inc.

Add: 1660 South Highway 100, Suite 500 St. Louis Park,
MN 55416, USA.

Email: info@bioworld.com

Tel: 6123263284

Fax: 6122933841

Bioworld technology, co. Ltd.

Add: No 9, weidi road Qixia District Nanjing, 210046,
P. R. China.

Email: info@biogot.com

Tel: 0086-025-68037686

Fax: 0086-025-68035151