

EGFR (phospho-Y1068) polyclonal antibody

Catalog: BS4064

Host: Rabbit

Reactivity: Human, Mouse, Rat

Background:

Epidermal growth factor mediates its effects on cell growth through its interaction with a cell surface glycoprotein designated the EGF receptor. Binding of EGF or TGF α to the EGF receptor activates tyrosine-specific protein kinase activity intrinsic to the EGF receptor. The carboxy-terminal tyrosine residues on EGFR, Tyr 1068 and Tyr 1173, are the major sites of autophosphorylation, which occurs as a result of EGF binding. Once activated, EGFR mediates the binding of the phosphotyrosine binding (PTB) domain of GRB2 through direct interactions with Tyr 1068 and Tyr 1086 and through indirect interactions with Tyr 1173 in the Ras signaling pathway. Tyr 1173 of EGFR also functions as a kinase substrate. Phosphorylation of Tyr 992, Tyr 1068 and Tyr 1086 is required for conformational change in the C-terminal tail of the EGF receptor, regulates Actin filament accumulation at the plasma membrane and Cdc42 stimulates formation of filopodia.

Product:

1 mg/ml in Phosphate buffered saline (PBS) with 0.05% sodium azide, approx. pH 7.2.

Molecular Weight:

~ 175 kDa

Swiss-Prot:

P00533

Purification&Purity:

The antibody was affinity-purified from rabbit antiserum by affinity-chromatography using epitope-specific immunogen and the purity is > 95% (by SDS-PAGE).

Applications:

WB: 1:500~1:1000

IHC: 1:50~1:200

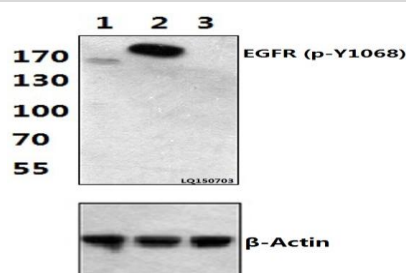
Storage&Stability:

Store at 4 °C short term. Aliquot and store at -20 °C long term. Avoid freeze-thaw cycles.

Specificity:

p-EGFR (Y1068) polyclonal antibody detects endogenous levels of EGFR protein only when phosphorylated at Tyr1068 (removal of the signal peptide).

DATA:

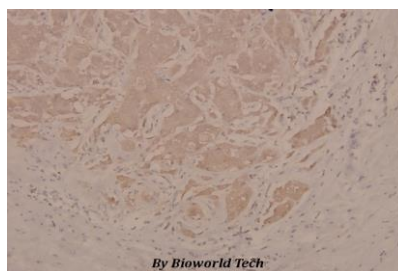


Western blot (WB) analysis of EGFR (phospho-Y1068) polyclonal antibody at 1:500 dilution

Lane1:Hela whole cell lysate(40ug)

Lane2:Hela treated with H2O2 (100nmol/ml, 28min) whole cell lysate (40ug)

Lane3:Hela treated with H2O2 (100nmol/ml, 28min, λ -ppase) whole cell lysate (40ug)



Immunohistochemistry (IHC) analyzes of p-EGFR (Y1068) pAb in paraffin-embedded human breast carcinoma tissue at 1:100.

Note:

For research use only, not for use in diagnostic procedure.

Bioworld Technology, Inc.

Add: 1660 South Highway 100, Suite 500 St. Louis Park, MN 55416, USA.

Email: info@bioworld.com

Tel: 6123263284

Fax: 6122933841

Bioworld technology, co. Ltd.

Add: No 9, weidi road Qixia District Nanjing, 210046, P. R. China.

Email: info@biogot.com

Tel: 0086-025-68037686

Fax: 0086-025-68035151



PRODUCT DATA SHEET

Bioworld Technology, Inc.

Bioworld Technology, Inc.

Add: 1660 South Highway 100, Suite 500 St. Louis Park,
MN 55416, USA.

Email: info@bioworld.com

Tel: 6123263284

Fax: 6122933841

Bioworld technology, co. Ltd.

Add: No 9, weidi road Qixia District Nanjing, 210046,
P. R. China.

Email: info@biogot.com

Tel: 0086-025-68037686

Fax: 0086-025-68035151