

ER α (phospho-S167) polyclonal antibody

Catalog: BS4072

Host: Rabbit

Reactivity: Human, Mouse, Rat

Background:

Estrogen receptors (ER) are members of the steroid/thyroid hormone receptor superfamily of ligand-activated transcription factors. Estrogen receptors, including ER α and ER β , contain DNA binding and ligand binding domains and are critically involved in regulating the normal function of reproductive tissues. They are located in the nucleus, though some estrogen receptors associate with the cell surface membrane and can be rapidly activated by exposure of cells to estrogen. ER α and ER β have been shown to be differentially activated by various ligands. Receptor-ligand interactions trigger a cascade of events, including dissociation from heat shock proteins, receptor dimerization, phosphorylation and the association of the hormone activated receptor with specific regulatory elements in target genes. Evidence suggests that ER α and ER β may be regulated by distinct mechanisms even though they share many functional characteristics.

Product:

1 mg/ml in Phosphate buffered saline (PBS) with 0.05% sodium azide, approx. pH 7.2.

Molecular Weight:

~ 66 kDa

Swiss-Prot:

P03372

Purification&Purity:

The antibody was affinity-purified from rabbit antiserum by affinity-chromatography using epitope-specific immunogen and the purity is > 95% (by SDS-PAGE).

Applications:

WB: 1:500~1:1000

IHC: 1:50~1:200

Storage&Stability:

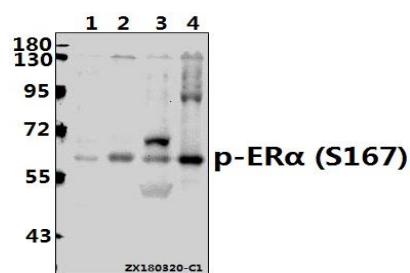
Store at 4 °C short term. Aliquot and store at -20 °C long

term. Avoid freeze-thaw cycles.

Specificity:

p-ER α (S167) polyclonal antibody detects endogenous levels of ER α protein only when phosphorylated at Ser167

DATA:



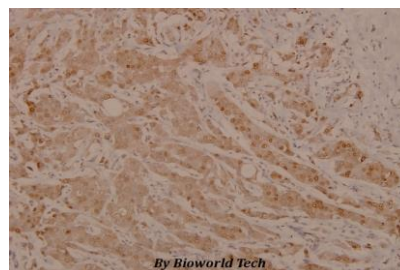
Western blot (WB) analysis of p-ER α (S167) pAb at 1:500 dilution

Lane1:Hela whole cell lysate(40ug)

Lane2:SK-OVCAR3 whole cell lysate(40ug)

Lane3:U-87MG whole cell lysate(40ug)

Lane4:H9C2 whole cell lysate(40ug)



Immunohistochemistry (IHC) analyzes of p-ER α (S167) pAb in paraffin-embedded human breast carcinoma tissue at 1:100.

Note:

For research use only, not for use in diagnostic procedure.

Bioworld Technology, Inc.

Add: 1660 South Highway 100, Suite 500 St. Louis Park, MN 55416, USA.

Email: info@bioworld.com

Tel: 6123263284

Fax: 6122933841

Bioworld technology, co. Ltd.

Add: No 9, weidi road Qixia District Nanjing, 210046, P. R. China.

Email: info@biogot.com

Tel: 0086-025-68037686

Fax: 0086-025-68035151