

MITF (phospho-S180) polyclonal antibody

Catalog: BS4328

Host: Rabbit

Reactivity: Human, Mouse, Rat

BackGround:

MITF is a transcription factor that contains both basic helix-loop-helix and leucine zipper structural features. Plays a critical role in the differentiation of various cell types including neural crest- derived melanocytes, mast cells, osteoclasts and optic cup-derived retinal pigment epithelium. Two isoforms are known: the M-isoform is expressed exclusively in melanocytes, while the A-isoform has a much broader range of expression. Mutations in MITF can lead to Waardenburg syndrome. Ten alternatively spliced isoforms have been described.

Product:

Rabbit IgG, 1mg/ml in PBS with 0.02% sodium azide, 50% glycerol, pH7.2

Molecular Weight:

~ 59 kDa

Swiss-Prot:

O75030

Purification&Purity:

The antibody was affinity-purified from rabbit antiserum by affinity-chromatography using epitope-specific immunogen and the purity is > 95% (by SDS-PAGE).

Applications:

IHC: 1:50~1:200

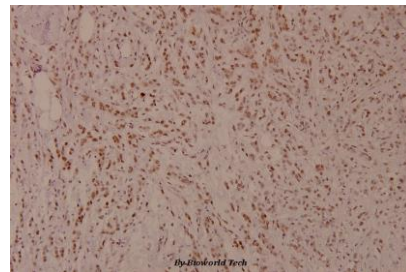
Storage&Stability:

Store at 4 °C short term. Aliquot and store at -20 °C long term. Avoid freeze-thaw cycles.

Specificity:

p-MITF (S180) polyclonal antibody detects endogenous levels of MITF protein only when phosphorylated at Ser180

DATA:



Immunohistochemistry (IHC) analyzes of p-MITF (S180) pAb in paraffin-embedded human breast carcinoma tissue at 1:100.

Note:

For research use only, not for use in diagnostic procedure.

Bioworld Technology, Inc.

Add: 1660 South Highway 100, Suite 500 St. Louis Park, MN 55416, USA.

Email: info@bioworld.com

Tel: 6123263284

Fax: 6122933841

Bioworld technology, co. Ltd.

Add: No 9, weidi road Qixia District Nanjing, 210046, P. R. China.

Email: info@biogol.com

Tel: 0086-025-68037686

Fax: 0086-025-68035151