

p70 S6K (phospho-T389) polyclonal antibody

Catalog: BS4440

Host: Rabbit

Reactivity: Human, Mouse, Rat

BackGround:

p70 S6 kinase is a mitogen activated Ser/Thr protein kinase that is required for cell growth and G1 cell cycle progression. Phosphorylation of Thr229 in the catalytic domain and Thr389 in the linker domain are most critical for kinase function. Phosphorylation of Thr389, however, most closely correlates with p70 kinase activity in vivo. Prior phosphorylation of Thr389 is required for the action of phosphoinositide 3-dependent protein kinase 1 (PDK1) on Thr229. Phosphorylation of this site is stimulated by growth factors such as insulin, EGF and FGF, as well as by serum and some G-protein-coupled receptor ligands, and is blocked by wortmannin, LY294002 (PI-3K inhibitor) and rapamycin (FRAP/mTOR inhibitor).

Product:

1mg/ml in PBS with 0.1% Sodium Azide, 50% Glycerol.

Molecular Weight:

~ 59,70,85 kDa

Swiss-Prot:

P23443

Purification&Purity:

The antibody was affinity-purified from rabbit antiserum by affinity-chromatography using epitope-specific immunogen and the purity is > 95% (by SDS-PAGE).

Applications:

WB: 1:500~1:1000

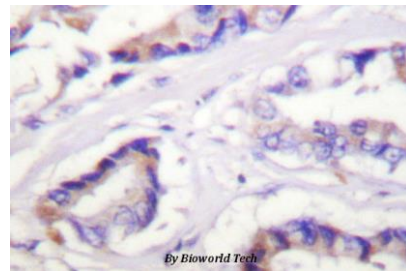
IHC: 1:50~1:200

Storage&Stability:

Store at 4 °C short term. Aliquot and store at -20 °C long term. Avoid freeze-thaw cycles.

Specificity:

p-p70 S6K (T389) polyclonal antibody detects endogenous levels of p70 S6 kinase only when phosphorylated at Thr389. This antibody also detects p85 S6 kinase when phosphorylated at Thr412.

DATA:

Immunohistochemistry (IHC) analyzes of p-p70 S6K (T389) pAb in paraffin-embedded human breast carcinoma tissue.

Note:

For research use only, not for use in diagnostic procedure.

Bioworld Technology, Inc.

Add: 1660 South Highway 100, Suite 500 St. Louis Park, MN 55416, USA.

Email: info@bioworld.com

Tel: 6123263284

Fax: 6122933841

Bioworld technology, co. Ltd.

Add: No 9, weidi road Qixia District Nanjing, 210046, P. R. China.

Email: info@biogot.com

Tel: 0086-025-68037686

Fax: 0086-025-68035151