

## MSK1(Phospho-Ser360) polyclonal antibody

Catalog: BS4521

Host: Rabbit

Reactivity: Human,Rat,Mouse

### Background:

MSK-1 is a mitogen and stress activated protein kinase-1 which belongs to the AGC family of kinases and is related in structure to the ribosomal p70 S6 kinase subfamily. MSK-1 can be activated by ERK1/2 and SAPK2 /p38 MAP kinase. It is also known to be required for the phosphorylation of CREB, ATF1 H3 and HMG-14 in response to mitogen and stress. Similar to RSK, MSK-1 contains two kinase domains (N-term and a C-term). Once phosphorylated on Thr581 and Ser360 by ERK1/2 and SAPK2/p38, MSK-1 autophosphorylates on at least 5 sites. Of these autophosphorylation sites Ser212 and Ser376 get phosphorylated by the C-terminal kinase domain of MSK-1 which is essential for the catalytic activity of the N-terminal kinase domain.

### Product:

Rabbit IgG, 1mg/ml in PBS with 0.02% sodium azide, 50% glycerol, pH7.2.

### Molecular Weight:

~ 100 kDa

### Swiss-Prot:

O75582

### Purification&Purity:

The antibody was affinity-purified from rabbit antiserum by affinity-chromatography using epitope-specific immunogen and the purity is > 95% (by SDS-PAGE).

### Applications:

WB: 1:500~1:1000

IF: 1:100~1:500

### Storage&Stability:

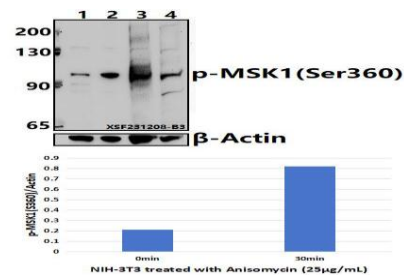
Store at 4 °C short term. Aliquot and store at -20 °C long term. Avoid freeze-thaw cycles.

### Specificity:

MSK1(Phospho-Ser360) polyclonal antibody detects en-

dogenous levels of MSK1 protein only when phosphorylated at Ser360.

### DATA:



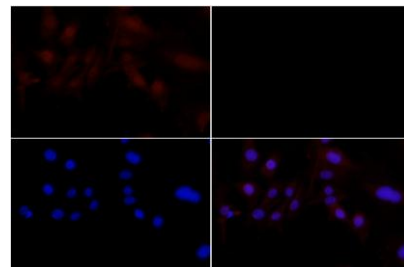
Western blot (WB) analysis of MSK1(Phospho-Ser360) polyclonal antibody at 1:500 dilution

Lane1:NIH-3T3 whole cell lysate(30ug)

Lane2:NIH-3T3 treated with Anisomycin (25µg/mL,30 minutes) whole cell lysate(15ug)

Lane3:HCT116 whole cell lysate(30ug)

Lane4:PMVEC whole cell lysate(30ug)



Immunofluores-

cence analysis of NIH-3T3 cells using MSK1(Phospho-Ser360) pAb at dilution of 1:200 (40x lens).

### Note:

For research use only, not for use in diagnostic procedure.

### Bioworld Technology, Inc.

Add: 1660 South Highway 100, Suite 500 St. Louis Park, MN 55416,USA.

Email: [info@bioworld.com](mailto:info@bioworld.com)

Tel: 6123263284

Fax: 6122933841

### Bioworld technology, co. Ltd.

Add: No 9, weidi road Qixia District Nanjing, 210046, P. R. China.

Email: [info@biogot.com](mailto:info@biogot.com)

Tel: 0086-025-68037686

Fax: 0086-025-68035151