

## SEC61A Recombinant Rabbit mAb

Catalog: BS45222

Host: Rabbit

Reactivity: Human, Mouse, Rat

### BackGround:

The protein encoded by this gene has similarity to a mouse protein which suggests a role in the insertion of secretory and membrane polypeptides into the endoplasmic reticulum. It may also be required for the assembly of membrane and secretory proteins. Alternative splicing results in multiple transcript variants. [provided by RefSeq, Dec 2008]

### Product:

Store at -20 °C. Supplied in 50mM Tris-Glycine(pH 7.4), 0.15M NaCl, 40%Glycerol, 0.01% sodium azide and 0.05% BSA. Stable for 12 months from date of receipt.

### Molecular Weight:

40 kDa

### Swiss-Prot:

Q9H9S3

### Purification&Purity:

Affinity Purification

### Applications:

WB: 1:1000-1:5000 IHC: 1:20-1:50 ICC/IF:

1:50 FC: 1:20 IP: 1:20

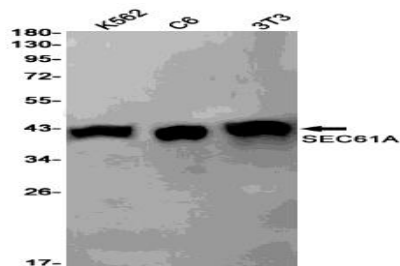
### Storage&Stability:

Store at 4 °C short term. Aliquot and store at -20 °C long term. Avoid freeze-thaw cycles.

### Isotype:

IgG

### DATA:



Western blot detection of SEC61A in K562, C6, 3T3 cell lysates using SEC61A antibody(1:1000 diluted).

### Note:

For research use only, not for use in diagnostic procedure.

### Bioworld Technology, Inc.

Add: 1660 South Highway 100, Suite 500 St. Louis Park,  
MN 55416, USA.

Email: [info@bioworld.com](mailto:info@bioworld.com)

Tel: 6123263284

Fax: 6122933841

### Bioworld technology, co. Ltd.

Add: No 9, weidi road Qixia District Nanjing, 210046,  
P. R. China.

Email: [info@biogot.com](mailto:info@biogot.com)

Tel: 0086-025-68037686

Fax: 0086-025-68035151