

## GSK3 beta Recombinant Rabbit mAb

Catalog: BS45435

Host: Rabbit

Reactivity: Human, Mouse

### BackGround:

The protein encoded by this gene is a serine-threonine kinase belonging to the glycogen synthase kinase sub-family. It is a negative regulator of glucose homeostasis and is involved in energy metabolism, inflammation, ER-stress, mitochondrial dysfunction, and apoptotic pathways. Defects in this gene have been associated with Parkinson disease and Alzheimer disease. [provided by RefSeq, Aug 2017]

### Product:

Store at -20 °C. Supplied in 50mM Tris-Glycine(pH 7.4), 0.15M NaCl, 40%Glycerol, 0.01% sodium azide and 0.05% BSA. Stable for 12 months from date of receipt.

### Molecular Weight:

47 kDa

### Swiss-Prot:

P49841

### Purification&Purity:

Affinity Purification

### Applications:

WB: 1:1000-1:5000 &lt;br /&gt; IHC: 1:200 &lt;br /&gt; ICC/IF:

1:100 &lt;br /&gt; FC: 1:100

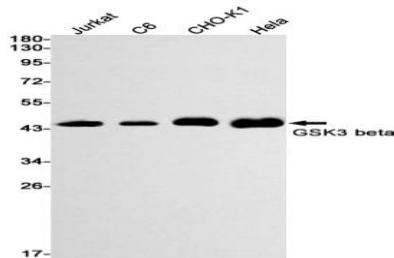
### Storage&Stability:

Store at 4 °C short term. Aliquot and store at -20 °C long term. Avoid freeze-thaw cycles.

### Isotype:

IgG

### DATA:



Western blot detection of GSK3 beta in Jurkat, C6, CHO-K1, HeLa cell lysates using GSK3 beta antibody (1:1000 diluted).

### Note:

For research use only, not for use in diagnostic procedure.

### Bioworld Technology, Inc.

Add: 1660 South Highway 100, Suite 500 St. Louis Park,  
MN 55416, USA.

Email: [info@bioworld.com](mailto:info@bioworld.com)

Tel: 6123263284

Fax: 6122933841

### Bioworld technology, co. Ltd.

Add: No 9, weidi road Qixia District Nanjing, 210046,  
P. R. China.

Email: [info@biogot.com](mailto:info@biogot.com)

Tel: 0086-025-68037686

Fax: 0086-025-68035151