

Cathepsin B Recombinant Rabbit mAb

Catalog: BS45533

Host: Rabbit

Reactivity: Mouse, Rat

BackGround:

This gene encodes a member of the peptidase C1 family and preproprotein that is proteolytically processed to generate multiple protein products. These products include the cathepsin B light and heavy chains, which can dimerize to generate the double chain form of the enzyme. This enzyme is a lysosomal cysteine protease with both endopeptidase and exopeptidase activity that may play a role in protein turnover. Homozygous knockout mice for this gene exhibit reduced pancreatic damage following induced pancreatitis and reduced hepatocyte apoptosis in a model of liver injury. Pseudogenes of this gene have been identified in the genome. [provided by RefSeq, Aug 2015]

Product:

Store at -20 °C. Supplied in 50mM Tris-Glycine(pH 7.4), 0.15M NaCl, 40%Glycerol, 0.01% sodium azide and 0.05% BSA. Stable for 12 months from date of receipt.

Molecular Weight:

44,27,24 kDa

Swiss-Prot:

P10605

Purification&Purity:

Affinity Purification

Applications:

WB: 1:1000
IHC: 1:200
ICC/IF: 1:50
FC: 1:100

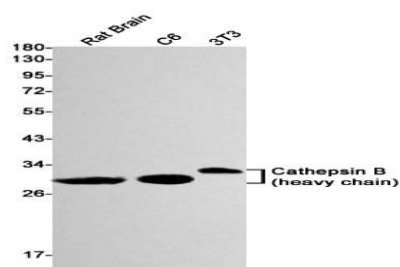
Storage&Stability:

Store at 4 °C short term. Aliquot and store at -20 °C long term. Avoid freeze-thaw cycles.

Isotype:

IgG

DATA:



Western blot detection of Cathepsin B in Rat Brain, C6, 3T3 cell lysates using Cathepsin B antibody (1:1000 diluted).

Note:

For research use only, not for use in diagnostic procedure.

Bioworld Technology, Inc.

Add: 1660 South Highway 100, Suite 500 St. Louis Park, MN 55416, USA.

Email: info@bioworld.com

Tel: 6123263284

Fax: 6122933841

Bioworld technology, co. Ltd.

Add: No 9, weidi road Qixia District Nanjing, 210046, P. R. China.

Email: info@biogot.com

Tel: 0086-025-68037686

Fax: 0086-025-68035151