

AFG2 Recombinant Rabbit mAb

Catalog: BS45730

Host: Rabbit

Reactivity: Human

BackGround:

This gene encodes a member of the ATPase associated with diverse activities family, whose members are defined by a highly conserved ATPase domain. Members of this family participate in diverse cellular processes that include membrane fusion, DNA replication, microtubule severing, and protein degradation. The protein encoded by this gene has a putative mitochondrial targeting sequence and has been proposed to function in maintenance of mitochondrial function and integrity during mouse spermatogenesis. Allelic variants in this gene have been associated with epilepsy, hearing loss, and cognitive disability syndrome. Alternative splicing results in multiple transcript variants. [provided by RefSeq, Sep 2016]

Product:

Store at -20 °C. Supplied in 50mM Tris-Glycine(pH 7.4), 0.15M NaCl, 40%Glycerol, 0.01% sodium azide and 0.05% BSA. Stable for 12 months from date of receipt.

Molecular Weight:

98 kDa

Swiss-Prot:

Q8NB90

Purification&Purity:

Affinity Purification

Applications:

WB: 1:1000
FC: 1:20

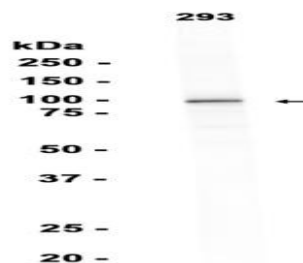
Storage&Stability:

Store at 4 °C short term. Aliquot and store at -20 °C long term. Avoid freeze-thaw cycles.

Isotype:

IgG

DATA:



Western blot analysis of extracts from 293 cells using db13331 at 1:1000.

Note:

For research use only, not for use in diagnostic procedure.

Bioworld Technology, Inc.

Add: 1660 South Highway 100, Suite 500 St. Louis Park,
MN 55416, USA.

Email: info@bioworld.com

Tel: 6123263284

Fax: 6122933841

Bioworld technology, co. Ltd.

Add: No 9, weidi road Qixia District Nanjing, 210046,
P. R. China.

Email: info@biogot.com

Tel: 0086-025-68037686

Fax: 0086-025-68035151