

Uromodulin Recombinant Rabbit mAb

Catalog: BS45816

Host: Rabbit

Reactivity: Mouse, Rat

BackGround:

This gene encodes a glycoprotein that is the most abundant protein in mammalian urine under physiological conditions. It is synthesized in the kidney as a glycosyl-phosphatidylinositol anchored protein and released into urine as a soluble form by proteolytic cleavage. It is thought to regulate water and salt balance in the thick ascending limb of Henle and to protect against urinary tract infection and calcium oxalate crystal formation. In mouse deficiency of this gene is associated with increased susceptibility to bacterial infections and formation of calcium crystals in kidneys. Alternative splicing results in multiple transcript variants. [provided by RefSeq, Jul 2013]

Product:

Store at -20 °C. Supplied in 50mM Tris-Glycine(pH 7.4), 0.15M NaCl, 40%Glycerol, 0.01% sodium azide and 0.05% BSA. Stable for 12 months from date of receipt.

Molecular Weight:

90-105 kDa

Swiss-Prot:

Q91X17, P27590

Purification&Purity:

Affinity Purification

Applications:

WB: 1:1000 IHC: 1:100 IP: 1:20

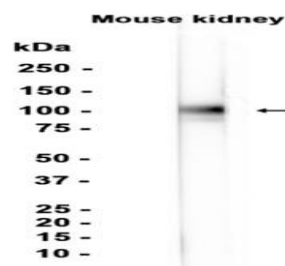
Storage&Stability:

Store at 4 °C short term. Aliquot and store at -20 °C long term. Avoid freeze-thaw cycles.

Isotype:

IgG

DATA:



Western blot analysis of extracts from Mouse brain kidney using db11573 at 1:1000.

Note:

For research use only, not for use in diagnostic procedure.

Bioworld Technology, Inc.

Add: 1660 South Highway 100, Suite 500 St. Louis Park, MN 55416, USA.

Email: info@bioworld.com

Tel: 6123263284

Fax: 6122933841

Bioworld technology, co. Ltd.

Add: No 9, weidi road Qixia District Nanjing, 210046, P. R. China.

Email: info@biogot.com

Tel: 0086-025-68037686

Fax: 0086-025-68035151