

## PON2 Recombinant Rabbit mAb

Catalog: BS45818

Host: Rabbit

Reactivity: Mouse, Rat

### BackGround:

Predicted to enable arylesterase activity and identical protein binding activity. Predicted to be involved in aromatic compound catabolic process and response to toxic substance. Predicted to be located in several cellular components, including lysosome; mitochondrion; and nucleus. Is expressed in several structures, including alimentary system; brain; cardiovascular system; genitourinary system; and immune system. Human ortholog(s) of this gene implicated in coronary artery disease; familial hypercholesterolemia; neurodegenerative disease (multiple); type 2 diabetes mellitus; and vascular dementia. Orthologous to human PON2 (paraoxonase 2). [provided by Alliance of Genome Resources, Apr 2022]

### Product:

Store at -20 °C. Supplied in 50mM Tris-Glycine(pH 7.4), 0.15M NaCl, 40%Glycerol, 0.01% sodium azide and 0.05% BSA. Stable for 12 months from date of receipt.

### Molecular Weight:

40 kDa

### Swiss-Prot:

Q62086, Q6AXM8

### Purification&Purity:

Affinity Purification

### Applications:

WB: 1:1000&lt;br /&gt;FC: 1:500&lt;br /&gt;IP: 1:20

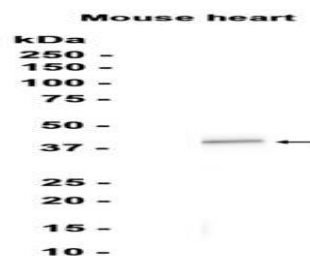
### Storage&Stability:

Store at 4 °C short term. Aliquot and store at -20 °C long term. Avoid freeze-thaw cycles.

### Isotype:

IgG

### DATA:



Western blot analysis of extracts from Mouse heart tissue using db11403 at 1:1000.

### Note:

For research use only, not for use in diagnostic procedure.

### Bioworld Technology, Inc.

Add: 1660 South Highway 100, Suite 500 St. Louis Park,  
MN 55416, USA.

Email: [info@bioworld.com](mailto:info@bioworld.com)

Tel: 6123263284

Fax: 6122933841

### Bioworld technology, co. Ltd.

Add: No 9, weidi road Qixia District Nanjing, 210046,  
P. R. China.

Email: [info@biogot.com](mailto:info@biogot.com)

Tel: 0086-025-68037686

Fax: 0086-025-68035151