

BMI1 Recombinant Rabbit mAb

Catalog: BS46297

Host: Rabbit

Reactivity: Human, Mouse

BackGround:

This locus represents naturally occurring read-through transcription between the neighboring COMM domain-containing protein 3 and polycomb complex protein BMI-1 genes on chromosome 10. The read-through transcript produces a fusion protein that shares sequence identity with each individual gene product. [provided by RefSeq, Feb 2011]

Product:

Store at -20 °C. Supplied in 50mM Tris-Glycine(pH 7.4), 0.15M NaCl, 40%Glycerol, 0.01% sodium azide and 0.05% BSA. Stable for 12 months from date of receipt.

Molecular Weight:

43 kDa

Swiss-Prot:

P35226

Purification&Purity:

Affinity Purification

Applications:

WB: 1:1000 IHC: 1:50 ICC/IF: 1:20 FC:

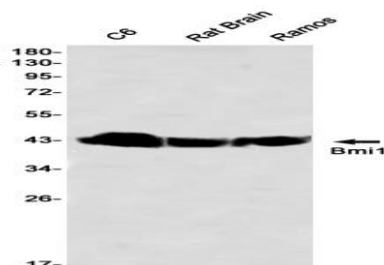
1:20 IP: 1:20

Storage&Stability:

Store at 4 °C short term. Aliquot and store at -20 °C long term. Avoid freeze-thaw cycles.

Isotype:

IgG

DATA:

Western blot detection of Bmi1 in C6, Rat Brain, Ramos using Bmi1 antibody(1:1000 diluted)

Note:

For research use only, not for use in diagnostic procedure.

Bioworld Technology, Inc.

Add: 1660 South Highway 100, Suite 500 St. Louis Park,
MN 55416, USA.

Email: info@bioworld.com

Tel: 6123263284

Fax: 6122933841

Bioworld technology, co. Ltd.

Add: No 9, weidi road Qixia District Nanjing, 210046,
P. R. China.

Email: info@biogot.com

Tel: 0086-025-68037686

Fax: 0086-025-68035151