

PTF1A Recombinant Rabbit mAb

Catalog: BS46312

Host: Rabbit

Reactivity: Human, Mouse, Rat

BackGround:

Transcription factor implicated in the cell fate determination in various organs. Binds to the E-box consensus sequence 5'-CANNTG-3'. Plays a role in early and late pancreas development and differentiation. Important for determining whether cells allocated to the pancreatic buds continue towards pancreatic organogenesis or revert back to duodenal fates. May be involved in the maintenance of exocrine pancreas-specific gene expression including ELA1 and amylase. Required for the formation of pancreatic acinar and ductal cells. Plays an important role in cerebellar development. Directly regulated by FOXN4 and RORC during retinal development, FOXN4-PTF1A pathway plays a central role in directing the differentiation of retinal progenitors towards horizontal and amacrine fates.

Product:

Store at -20 °C. Supplied in 50mM Tris-Glycine(pH 7.4), 0.15M NaCl, 40%Glycerol, 0.01% sodium azide and 0.05% BSA. Stable for 12 months from date of receipt.

Molecular Weight:

48 kDa

Swiss-Prot:

Q9QX98

Purification&Purity:

Affinity Purification

Applications:

WB: 1:1000
IP: 1:20

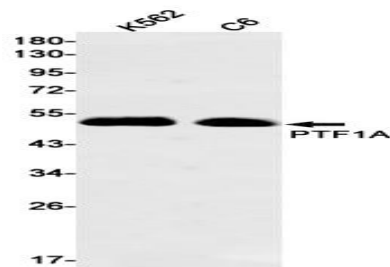
Storage&Stability:

Store at 4 °C short term. Aliquot and store at -20 °C long term. Avoid freeze-thaw cycles.

Isotype:

IgG

DATA:



Western blot detection of PTF1A in K562,C6 cell lysates using PTF1A antibody(1:1000 diluted).

Note:

For research use only, not for use in diagnostic procedure.

Bioworld Technology, Inc.

Add: 1660 South Highway 100, Suite 500 St. Louis Park, MN 55416, USA.

Email: info@bioworld.com

Tel: 6123263284

Fax: 6122933841

Bioworld technology, co. Ltd.

Add: No 9, weidi road Qixia District Nanjing, 210046, P. R. China.

Email: info@biogot.com

Tel: 0086-025-68037686

Fax: 0086-025-68035151