

## CECR5 Recombinant Rabbit mAb

Catalog: BS46432

Host: Rabbit

Reactivity: Human

### BackGround:

Candidate gene for the Cat Eye Syndrome (CES), a developmental disorder associated with the duplication of a 2 Mb region of 22q11.2. Duplication usually takes in the form of a supernumerary bisatellited isodicentric chromosome, resulting in four copies of the region (represents an inv dup(22)(q11)). CES is characterized clinically by the combination of coloboma of the iris and anal atresia with fistula, downslanting palpebral fissures, preauricular tags and/or pits, frequent occurrence of heart and renal malformations, and normal or near-normal mental development.

### Product:

Store at -20 °C. Supplied in 50mM Tris-Glycine(pH 7.4), 0.15M NaCl, 40% Glycerol, 0.01% sodium azide and 0.05% BSA. Stable for 12 months from date of receipt.

### Molecular Weight:

46 kDa

### Swiss-Prot:

Q9BXW7

### Purification&Purity:

Affinity Purification

### Applications:

WB: 1:1000 ICC/IF: 1:20 IP: 1:20

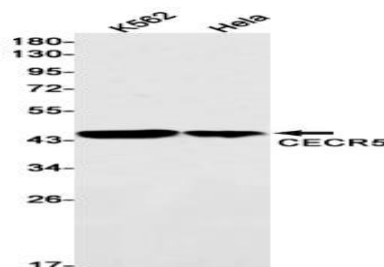
### Storage&Stability:

Store at 4 °C short term. Aliquot and store at -20 °C long term. Avoid freeze-thaw cycles.

### Isotype:

IgG

### DATA:



Western blot detection of CECR5 in K562, HeLa cell lysates using CECR5 antibody (1:1000 diluted).

### Note:

For research use only, not for use in diagnostic procedure.

### Bioworld Technology, Inc.

Add: 1660 South Highway 100, Suite 500 St. Louis Park, MN 55416, USA.

Email: [info@bioworld.com](mailto:info@bioworld.com)

Tel: 6123263284

Fax: 6122933841

### Bioworld technology, co. Ltd.

Add: No 9, weidi road Qixia District Nanjing, 210046, P. R. China.

Email: [info@biogot.com](mailto:info@biogot.com)

Tel: 0086-025-68037686

Fax: 0086-025-68035151