

PREB Recombinant Rabbit mAb

Catalog: BS46461

Host: Rabbit

Reactivity: Human

BackGround:

This gene encodes a protein that specifically binds to a Pit1-binding element of the prolactin (PRL) promoter. This protein may act as a transcriptional regulator and is thought to be involved in some of the developmental abnormalities observed in patients with partial trisomy 2p. This gene overlaps the abhydrolase domain containing 1 (ABHD1) gene on the opposite strand. [provided by RefSeq, Jul 2008]

Product:

Store at -20 °C. Supplied in 50mM Tris-Glycine(pH 7.4), 0.15M NaCl, 40%Glycerol, 0.01% sodium azide and 0.05% BSA. Stable for 12 months from date of receipt.

Molecular Weight:

46 kDa

Swiss-Prot:

Q9HCU5

Purification&Purity:

Affinity Purification

Applications:

WB: 1:1000-1:5000 IHC: 1:20-1:50 ICC/IF:

1:20-1:50 IP: 1:20

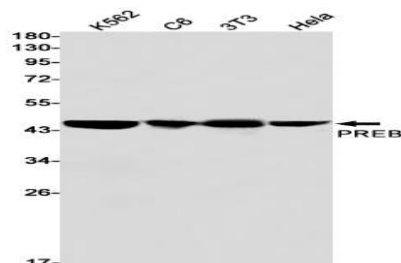
Storage&Stability:

Store at 4 °C short term. Aliquot and store at -20 °C long term. Avoid freeze-thaw cycles.

Isotype:

IgG

DATA:



Western blot detection of PREB in K562,C6,3T3,Hela cell lysates using PREB antibody(1:1000 diluted).

Note:

For research use only, not for use in diagnostic procedure.

Bioworld Technology, Inc.

Add: 1660 South Highway 100, Suite 500 St. Louis Park,
MN 55416, USA.

Email: info@bioworld.com

Tel: 6123263284

Fax: 6122933841

Bioworld technology, co. Ltd.

Add: No 9, weidi road Qixia District Nanjing, 210046,
P. R. China.

Email: info@biogot.com

Tel: 0086-025-68037686

Fax: 0086-025-68035151