

## Clusterin alpha chain Recombinant Rabbit mAb

Catalog: BS46650

Host: Rabbit

Reactivity: Mouse, Rat

### BackGround:

The protein encoded by this gene is a secreted chaperone that can, under some stress conditions, also be found in the cell cytosol. It has been suggested to be involved in several basic biological events such as cell death, tumor progression, and neurodegenerative disorders. The encoded preproprotein undergoes proteolytic processing to generate a disulfide-linked heterodimeric mature protein comprised of alpha and beta subunits. Mice lacking the encoded protein exhibit increased severity of autoimmune myocarditis, faster progression of the acute inflammation to myocardial scarring and decreased brain injury following neonatal hypoxic-ischemic injury. [provided by RefSeq, Nov 2015]

### Product:

Store at -20 °C. Supplied in 50mM Tris-Glycine(pH 7.4), 0.15M NaCl, 40%Glycerol, 0.01% sodium azide and 0.05% BSA. Stable for 12 months from date of receipt.

### Molecular Weight:

42 kDa

### Swiss-Prot:

Q06890

### Purification&Purity:

### Affinity Purification

### Applications:

WB: 1:1000&lt;br /&gt;IHC: 1:2500&lt;br /&gt;IP: 1:20

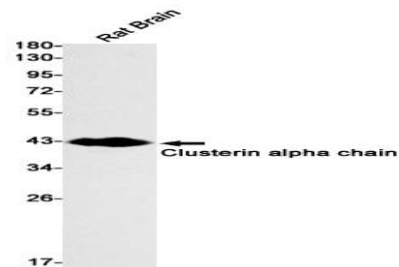
### Storage&Stability:

Store at 4 °C short term. Aliquot and store at -20 °C long term. Avoid freeze-thaw cycles.

### Isotype:

IgG

### DATA:



Western blot detection of Clusterin alpha chain in Rat Brain lysates using Clusterin alpha chain antibody(1:1000 diluted).

### Note:

For research use only, not for use in diagnostic procedure.

### Bioworld Technology, Inc.

Add: 1660 South Highway 100, Suite 500 St. Louis Park,  
MN 55416, USA.

Email: [info@bioworld.com](mailto:info@bioworld.com)

Tel: 6123263284

Fax: 6122933841

### Bioworld technology, co. Ltd.

Add: No 9, weidi road Qixia District Nanjing, 210046,  
P. R. China.

Email: [info@biogot.com](mailto:info@biogot.com)

Tel: 0086-025-68037686

Fax: 0086-025-68035151