

ATP1B3 Recombinant Rabbit mAb

Catalog: BS46658

Host: Rabbit

Reactivity: Human, Mouse, Rat

BackGround:

The protein encoded by this gene belongs to the family of Na⁺/K⁺ and H⁺/K⁺ ATPases beta chain proteins, and to the subfamily of Na⁺/K⁺ -ATPases. Na⁺/K⁺ -ATPase is an integral membrane protein responsible for establishing and maintaining the electrochemical gradients of Na and K ions across the plasma membrane. These gradients are essential for osmoregulation, for sodium-coupled transport of a variety of organic and inorganic molecules, and for electrical excitability of nerve and muscle. This enzyme is composed of two subunits, a large catalytic subunit (alpha) and a smaller glycoprotein subunit (beta). The beta subunit regulates, through assembly of alpha/beta heterodimers, the number of sodium pumps transported to the plasma membrane. The glycoprotein subunit of Na⁺/K⁺ -ATPase is encoded by multiple genes. This gene encodes a beta 3 subunit. This gene encodes a beta 3 subunit. A pseudogene exists for this gene, and it is located on chromosome 2. [provided by RefSeq, Jul 2008]

Product:

Store at -20 °C. Supplied in 50mM Tris-Glycine(pH 7.4), 0.15M NaCl, 40%Glycerol, 0.01% sodium azide and 0.05% BSA. Stable for 12 months from date of receipt.

Molecular Weight:

40 kDa

Swiss-Prot:

P54709

Purification&Purity:

Affinity Purification

Applications:

WB: 1:1000-1:5000 IHC: 1:20-1:50

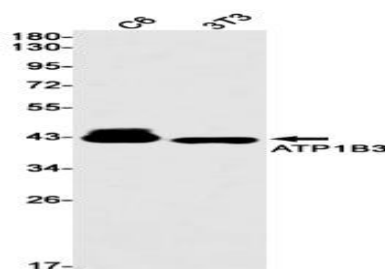
Storage&Stability:

Store at 4 °C short term. Aliquot and store at -20 °C long term. Avoid freeze-thaw cycles.

Isotype:

IgG

DATA:



Western blot detection of ATP1B3 in C6,3T3 cell lysates using ATP1B3 antibody(1:1000 diluted).

Note:

For research use only, not for use in diagnostic procedure.

Bioworld Technology, Inc.

Add: 1660 South Highway 100, Suite 500 St. Louis Park, MN 55416, USA.

Email: info@bioworld.com

Tel: 6123263284

Fax: 6122933841

Bioworld technology, co. Ltd.

Add: No 9, weidi road Qixia District Nanjing, 210046, P. R. China.

Email: info@biogot.com

Tel: 0086-025-68037686

Fax: 0086-025-68035151