

## CEP55 Recombinant Rabbit mAb

Catalog: BS46706

Host: Rabbit

Reactivity: Human, Mouse, Rat

### BackGround:

Plays a role in mitotic exit and cytokinesis (PubMed:16198290, PubMed:17853893)

### Product:

Store at -20 °C. Supplied in 50mM Tris-Glycine(pH 7.4), 0.15M NaCl, 40%Glycerol, 0.01% sodium azide and 0.05% BSA. Stable for 12 months from date of receipt.

### Molecular Weight:

55 kDa

### Swiss-Prot:

Q53EZ4

### Purification&Purity:

Affinity Purification

### Applications:

WB: 1:5000 IHC: 1:50 ICC/IF: 1:100 FC: 1:20

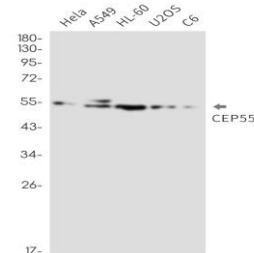
### Storage&Stability:

Store at 4 °C short term. Aliquot and store at -20 °C long term. Avoid freeze-thaw cycles.

### Isotype:

IgG

### DATA:



Western blot detection of CEP55 in HeLa, A549, HL-60, U2OS, C6 cell lysates using CEP55 antibody (1:1000 diluted).

### Note:

For research use only, not for use in diagnostic procedure.

### Bioworld Technology, Inc.

Add: 1660 South Highway 100, Suite 500 St. Louis Park, MN 55416, USA.

Email: [info@bioworld.com](mailto:info@bioworld.com)

Tel: 6123263284

Fax: 6122933841

### Bioworld technology, co. Ltd.

Add: No 9, weidi road Qixia District Nanjing, 210046, P. R. China.

Email: [info@biogot.com](mailto:info@biogot.com)

Tel: 0086-025-68037686

Fax: 0086-025-68035151