

## Paxillin Recombinant Rabbit mAb

Catalog: BS46741

Host: Rabbit

Reactivity: Human, Mouse, Rat

### BackGround:

This gene encodes a cytoskeletal protein involved in actin-membrane attachment at sites of cell adhesion to the extracellular matrix (focal adhesion). Alternatively spliced transcript variants encoding different isoforms have been described for this gene. These isoforms exhibit different expression pattern, and have different biochemical, as well as physiological properties (PMID:9054445). [provided by RefSeq, Aug 2011]

### Product:

Store at -20 °C. Supplied in 50mM Tris-Glycine(pH 7.4), 0.15M NaCl, 40%Glycerol, 0.01% sodium azide and 0.05% BSA. Stable for 12 months from date of receipt.

### Molecular Weight:

65 kDa

### Swiss-Prot:

P49023

### Purification&Purity:

Affinity Purification

### Applications:

WB: 1:2000&lt;br /&gt;IHC: 1:20&lt;br /&gt;ICC/IF: 1:50&lt;br /&gt;FC:

1:20&lt;br /&gt;IP: 1:50

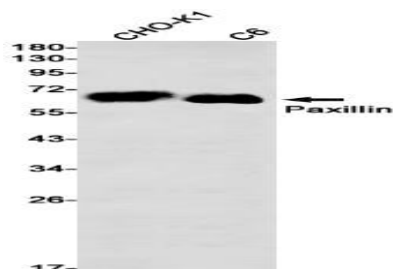
### Storage&Stability:

Store at 4 °C short term. Aliquot and store at -20 °C long term. Avoid freeze-thaw cycles.

### Isotype:

IgG

### DATA:



Western blot detection of Paxillin in CHO-K1,C6 cell lysates using Paxillin antibody(1:1000 diluted).

### Note:

For research use only, not for use in diagnostic procedure.

### Bioworld Technology, Inc.

Add: 1660 South Highway 100, Suite 500 St. Louis Park, MN 55416, USA.

Email: [info@bioworld.com](mailto:info@bioworld.com)

Tel: 6123263284

Fax: 6122933841

### Bioworld technology, co. Ltd.

Add: No 9, weidi road Qixia District Nanjing, 210046, P. R. China.

Email: [info@biogot.com](mailto:info@biogot.com)

Tel: 0086-025-68037686

Fax: 0086-025-68035151