

## SYPL1 Recombinant Rabbit mAb

Catalog: BS46747

Host: Rabbit

Reactivity: Human, Mouse, Rat

**BackGround:**

Synaptophysin-like protein 1

**Product:**

Store at -20 °C. Supplied in 50mM Tris-Glycine(pH 7.4), 0.15M NaCl, 40% Glycerol, 0.01% sodium azide and 0.05% BSA. Stable for 12 months from date of receipt.

**Molecular Weight:**

29 kDa

**Swiss-Prot:**

Q16563

**Purification&Purity:**

Affinity Purification

**Applications:**

WB: 1:1000&lt;br /&gt;IHC: 1:20-1:100&lt;br /&gt;FC: 1:20

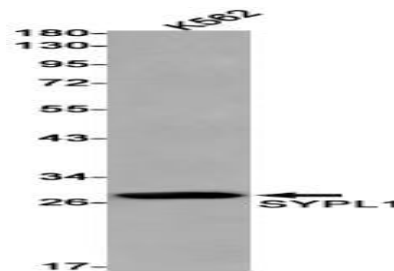
**Storage&Stability:**

Store at 4 °C short term. Aliquot and store at -20 °C long

term. Avoid freeze-thaw cycles.

**Isotype:**

IgG

**DATA:**

Western blot detection of SYPL1 in K562 cell lysates using SYPL1 antibody(1:1000 diluted).

**Note:**

For research use only, not for use in diagnostic procedure.

**Bioworld Technology, Inc.**

Add: 1660 South Highway 100, Suite 500 St. Louis Park,  
MN 55416, USA.

Email: [info@bioworld.com](mailto:info@bioworld.com)

Tel: 6123263284

Fax: 6122933841

**Bioworld technology, co. Ltd.**

Add: No 9, weidi road Qixia District Nanjing, 210046,  
P. R. China.

Email: [info@biogot.com](mailto:info@biogot.com)

Tel: 0086-025-68037686

Fax: 0086-025-68035151