

## Serine Racemase Recombinant Rabbit mAb

Catalog: BS46775

Host: Rabbit

Reactivity: Human

**BackGround:**

Catalyzes the synthesis of D-serine from L-serine

**Product:**

Store at -20 °C. Supplied in 50mM Tris-Glycine(pH 7.4), 0.15M NaCl, 40% Glycerol, 0.01% sodium azide and 0.05% BSA. Stable for 12 months from date of receipt.

**Molecular Weight:**

37 kDa

**Swiss-Prot:**

Q9GZT4

**Purification&Purity:**

Affinity Purification

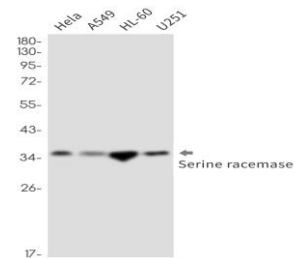
**Applications:**WB: 1:1000  
ICC/IF: 1:100  
IP: 1:20**Storage&Stability:**

Store at 4 °C short term. Aliquot and store at -20 °C long

term. Avoid freeze-thaw cycles.

**Isotype:**

IgG

**DATA:**

Western blot detection of Serine racemase in HeLa, A549, HL-60, U251 cell lysates using Serine racemase antibody (1:1000 diluted).

**Note:**

For research use only, not for use in diagnostic procedure.

**Bioworld Technology, Inc.**Add: 1660 South Highway 100, Suite 500 St. Louis Park,  
MN 55416, USA.Email: [info@bioworld.com](mailto:info@bioworld.com)

Tel: 6123263284

Fax: 6122933841

**Bioworld technology, co. Ltd.**Add: No 9, weidi road Qixia District Nanjing, 210046,  
P. R. China.Email: [info@biogot.com](mailto:info@biogot.com)

Tel: 0086-025-68037686

Fax: 0086-025-68035151