

TIMM44 Recombinant Rabbit mAb

Catalog: BS46788

Host: Rabbit

Reactivity: Human, Rat

BackGround:

This gene encodes a peripheral membrane protein associated with the mitochondrial inner membrane translocase, which functions in the import of proteins across the mitochondrial inner membrane and into the mitochondrial matrix. The encoded protein mediates binding of mitochondrial heat shock protein 70 to the translocase of inner mitochondrial membrane 23 (TIM23) complex. Expression of this gene is upregulated in kidney in a mouse model of diabetes. A mutation in this gene is associated with familial oncocyctic thyroid carcinoma. [provided by RefSeq, Jul 2016]

Product:

Store at -20 °C. Supplied in 50mM Tris-Glycine(pH 7.4), 0.15M NaCl, 40% Glycerol, 0.01% sodium azide and 0.05% BSA. Stable for 12 months from date of receipt.

Molecular Weight:

45 kDa

Swiss-Prot:

O43615

Purification&Purity:

Affinity Purification

Applications:

WB: 1:1000
ICC/IF: 1:50
FC: 1:50
IP: 1:20

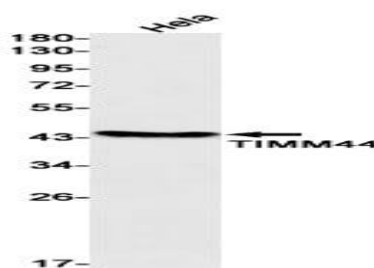
Storage&Stability:

Store at 4 °C short term. Aliquot and store at -20 °C long term. Avoid freeze-thaw cycles.

Isotype:

IgG

DATA:



Western blot detection of TIMM44 in HeLa cell lysates using TIMM44 antibody(1:1000 diluted).

Note:

For research use only, not for use in diagnostic procedure.

Bioworld Technology, Inc.

Add: 1660 South Highway 100, Suite 500 St. Louis Park, MN 55416, USA.

Email: info@bioworld.com

Tel: 6123263284

Fax: 6122933841

Bioworld technology, co. Ltd.

Add: No 9, weidi road Qixia District Nanjing, 210046, P. R. China.

Email: info@biogot.com

Tel: 0086-025-68037686

Fax: 0086-025-68035151