

GMEB1 Recombinant Rabbit mAb

Catalog: BS46809

Host: Rabbit

Reactivity: Human, Mouse, Rat

Background:

This gene encodes a member of KDWK gene family which associates with GMEB2 protein. The GMEB1-GMEB2 complex is essential for parvovirus DNA replication. Studies in rat for a similar gene suggest that this gene's role is to modulate the transactivation of the glucocorticoid receptor when it is bound to glucocorticoid response elements. Three alternative spliced transcript variants encoding different isoforms exist. [provided by RefSeq, Feb 2016]

Product:

Store at -20 °C. Supplied in 50mM Tris-Glycine(pH 7.4), 0.15M NaCl, 40%Glycerol, 0.01% sodium azide and 0.05% BSA. Stable for 12 months from date of receipt.

Molecular Weight:

80 kDa

Swiss-Prot:

Q9Y692

Purification&Purity:

Affinity Purification

Applications:

WB: 1:1000 IHC: 1:100 ICC/IF: 1:20
FC: 1:50 IP: 1:20

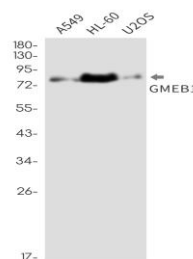
Storage&Stability:

Store at 4 °C short term. Aliquot and store at -20 °C long term. Avoid freeze-thaw cycles.

Isotype:

IgG

DATA:



Western blot detection of GMEB1 in A549,HL-60,U2OS cell lysates using GMEB1 antibody(1:1000 diluted).

Note:

For research use only, not for use in diagnostic procedure.

Bioworld Technology, Inc.

Add: 1660 South Highway 100, Suite 500 St. Louis Park,
MN 55416,USA.

Email: info@bioworld.com

Tel: 6123263284

Fax: 6122933841

Bioworld technology, co. Ltd.

Add: No 9, weidi road Qixia District Nanjing, 210046,
P. R. China.

Email: info@biogot.com

Tel: 0086-025-68037686

Fax: 0086-025-68035151