

## FANCA (phospho-S1149) polyclonal antibody

Catalog: BS4685

Host: Rabbit

Reactivity: Human, Mouse, Rat

### Background:

Fanconi anemia (FA) is an autosomal recessive disorder characterized by bone marrow failure, birth defects and chromosomal instability. At the cellular level, FA is characterized by spontaneous chromosomal breakage and a unique hypersensitivity to DNA cross-linking agents. At least eight complementation groups (A-G) have been identified and six FA genes (for subtypes A, C, D2, E, F and G) have been cloned. The FA proteins lack sequence homologies or motifs that could point to a molecular function. The cellular accumulation of FA proteins, including FANCA and FANCG, is subject to regulation by TNF $\alpha$  signaling. Phosphorylation of FANCA (Fanconi anemia complementation group) proteins is thought to be important for the function of the FA pathway. FANCA, also known as FACA and FANCA, associates with the Brm-related gene 1 (BRG1) product, a subunit of the SWI/SNF complex which remodels chromatin structure through a DNA-dependent ATPase activity. FANCA is mainly expressed in lymphoid tissues, testis and ovary. The amino-terminal region of the FANCA protein is required for FANCG binding, FANCC binding, nuclear localization and functional activity of the complex.

### Product:

Rabbit IgG, 1mg/ml in PBS with 0.02% sodium azide, 50% glycerol, pH7.2

### Molecular Weight:

~ 163 kDa

### Swiss-Prot:

O15360

### Purification&Purity:

The antibody was affinity-purified from rabbit antiserum by affinity-chromatography using epitope-specific immunogen and the purity is > 95% (by SDS-PAGE).

### Applications:

WB: 1:500~1:1000

IHC: 1:50~1:200

ICC: 1:50~1:200

IP: 1:50~1:200

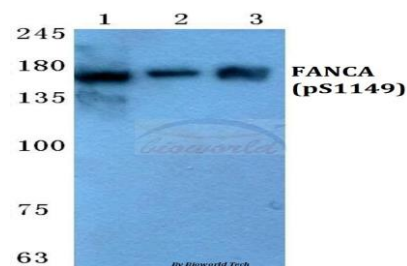
### Storage&Stability:

Store at 4 °C short term. Aliquot and store at -20 °C long term. Avoid freeze-thaw cycles.

### Specificity:

p-FANCA (S1149) polyclonal antibody detects endogenous levels of FANCA protein only when phosphorylated at Ser1149.

### DATA:

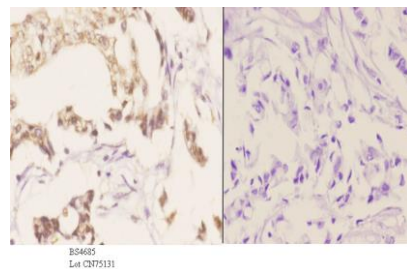


Western blot (WB) analysis of p-FANCA (S1149) polyclonal antibody at 1:500 dilution

Lane1:HepG2 cell lysate treated with EGF(0.1ng/ML,30mins)

Lane2:sp2/0 cell lysate treated with EGF(0.1ng/ML,30mins)

Lane3:H9C2 cell lysate treated with EGF(0.1ng/ML,30mins)



Immunohistochemistry (IHC) analyzes of p-FANCA (S1149) pAb in paraffin-embedded human breast carcinoma tissue at 1:50. showing cytoplasmic and nucleus staining. Negative control (the right) Using PBS instead of primary antibody, secondary antibody is Goat Anti-Rabbit IgG-biotin followed by avidin-peroxidase.

### Note:

### Bioworld Technology, Inc.

Add: 1660 South Highway 100, Suite 500 St. Louis Park, MN 55416, USA.

Email: [info@bioworld.com](mailto:info@bioworld.com)

Tel: 6123263284

Fax: 6122933841

### Bioworld technology, co. Ltd.

Add: No 9, weidi road Qixia District Nanjing, 210046, P. R. China.

Email: [info@biogot.com](mailto:info@biogot.com)

Tel: 0086-025-68037686

Fax: 0086-025-68035151



## PRODUCT DATA SHEET

Bioworld Technology, Inc.

---

For research use only, not for use in diagnostic procedure.

---

### **Bioworld Technology, Inc.**

**Add:** 1660 South Highway 100, Suite 500 St. Louis Park,  
MN 55416, USA.

**Email:** [info@bioworld.com](mailto:info@bioworld.com)

**Tel:** 6123263284

**Fax:** 6122933841

### **Bioworld technology, co. Ltd.**

**Add:** No 9, weidi road Qixia District Nanjing, 210046,  
P. R. China.

**Email:** [info@biogot.com](mailto:info@biogot.com)

**Tel:** 0086-025-68037686

**Fax:** 0086-025-68035151