

PTDSS2 Recombinant Rabbit mAb

Catalog: BS46937

Host: Rabbit

Reactivity: Human

BackGround:

The protein encoded by this gene catalyzes the conversion of phosphatidylethanolamine to phosphatidylserine, a structural membrane phospholipid that functions in cell signaling, blood coagulation, and apoptosis. The encoded enzyme also has a high affinity for docosahexaenoic acid (DHA) and can use it to make DHA-containing phosphatidylserine. [provided by RefSeq, Jul 2016]

Product:

Store at -20 °C. Supplied in 50mM Tris-Glycine(pH 7.4), 0.15M NaCl, 40% Glycerol, 0.01% sodium azide and 0.05% BSA. Stable for 12 months from date of receipt.

Molecular Weight:

56 kDa

Swiss-Prot:

Q9BVG9

Purification&Purity:

Affinity Purification

Applications:

WB: 1:1000-1:2000
FC: 1:20
IP: 1:20

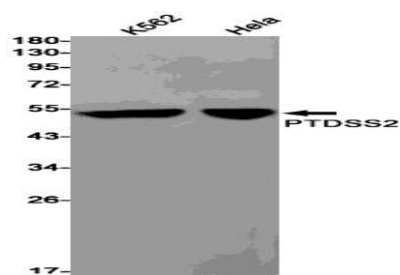
Storage&Stability:

Store at 4 °C short term. Aliquot and store at -20 °C long term. Avoid freeze-thaw cycles.

Isotype:

IgG

DATA:



Western blot detection of PTDSS2 in K562, HeLa cell lysates using PTDSS2 antibody(1:1000 diluted).

Note:

For research use only, not for use in diagnostic procedure.

Bioworld Technology, Inc.

Add: 1660 South Highway 100, Suite 500 St. Louis Park,
MN 55416, USA.

Email: info@bioworld.com

Tel: 6123263284

Fax: 6122933841

Bioworld technology, co. Ltd.

Add: No 9, weidi road Qixia District Nanjing, 210046,
P. R. China.

Email: info@biogot.com

Tel: 0086-025-68037686

Fax: 0086-025-68035151