

LAT (phospho-Y191) polyclonal antibody

Catalog: BS4702

Host: Rabbit

Reactivity: Human, Mouse, Rat

Background:

LAT, a transmembrane adaptor protein expressed in T, NK and mast cells, is an important mediator for T cell receptor (TCR) signaling. Upon TCR engagement, activated Zap-70 phosphorylates LAT at multiple conserved tyrosine residues within SH2 binding motifs, exposing these motifs as the docking sites for downstream signaling targets. The phosphorylation of LAT at Tyr171 and 191 enables the binding of Grb2, Gads/SLP-76, PLCgamma1 and PI3 kinase through their SH2 domain and translocates them to the membrane. This process eventually leads to activation of the corresponding signaling pathways.

Product:

1 mg/ml in Phosphate buffered saline (PBS) with 0.05% sodium azide, approx. pH 7.2.

Molecular Weight:

~ 38 kDa

Swiss-Prot:

O43561

Purification&Purity:

The antibody was affinity-purified from rabbit antiserum by affinity-chromatography using epitope-specific immunogen and the purity is > 95% (by SDS-PAGE).

Applications:

WB: 1:500~1:1000

IHC: 1:50~1:200

Storage&Stability:

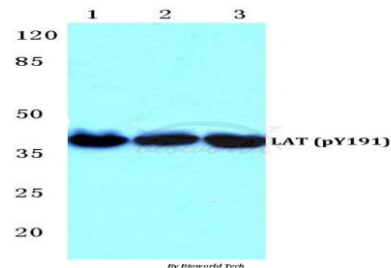
Store at 4 °C short term. Aliquot and store at -20 °C long term. Avoid freeze-thaw cycles.

Specificity:

p-LAT (Y191) polyclonal antibody detects endogenous levels of human LAT (Isoform Short) only when phos-

phorylated at Tyr191, and detects LAT (Isoform Long) only when phosphorylated at Tyr220.

DATA:

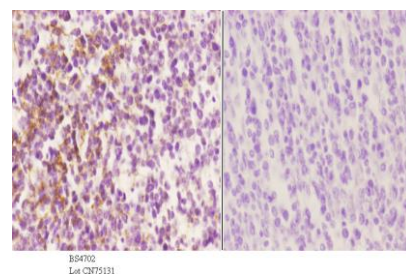


Western blot (WB) analysis of p-LAT (Y191) polyclonal antibody at 1:500 dilution

Lane1:Hela cell lysate treated with PMA(100nM,15mins)

Lane2:Raw264.7 cell lysate treated with PMA(100nM,15mins)

Lane3:PC12 cell lysate treated with PMA(100nM,15mins)



Immunohistochemistry (IHC) analyzes of p-LAT (Y191) pAb in paraffin-embedded human tonsil carcinoma tissue at 1:50, showing cell membrane staining. Negative control (the right) Using PBS instead of primary antibody, secondary antibody is Goat Anti-Rabbit IgG-biotin followed by avidin-peroxidase.

Note:

For research use only, not for use in diagnostic procedure.

Bioworld Technology, Inc.

Add: 1660 South Highway 100, Suite 500 St. Louis Park, MN 55416, USA.

Email: info@bioworld.com

Tel: 6123263284

Fax: 6122933841

Bioworld technology, co. Ltd.

Add: No 9, weidi road Qixia District Nanjing, 210046, P. R. China.

Email: info@biogol.com

Tel: 0086-025-68037686

Fax: 0086-025-68035151