

TRAPPC2 Recombinant Rabbit mAb

Catalog: BS47091

Host: Rabbit

Reactivity: Human, Mouse, Rat

BackGround:

The protein encoded by this gene is thought to be part of a large multi-subunit complex involved in the targeting and fusion of endoplasmic reticulum-to-Golgi transport vesicles with their acceptor compartment. In addition, the encoded protein can bind c-myc promoter-binding protein 1 and block its transcriptional repression capability. Mutations in this gene are a cause of spondyloepiphyseal dysplasia tarda (SED). A processed pseudogene of this gene is located on chromosome 19, and other pseudogenes are found on chromosomes 8 and Y. Alternatively spliced transcript variants have been found for this gene. [provided by RefSeq, Mar 2010]

Product:

Store at -20 °C. Supplied in 50mM Tris-Glycine(pH 7.4), 0.15M NaCl, 40%Glycerol, 0.01% sodium azide and 0.05% BSA. Stable for 12 months from date of receipt.

Molecular Weight:

16 kDa

Swiss-Prot:

O14582

Purification&Purity:

Affinity Purification

Applications:

WB: 1:1000

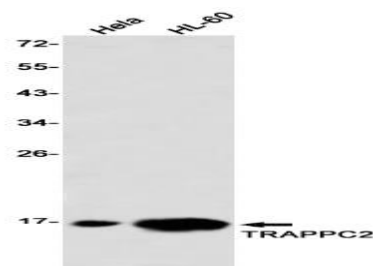
Storage&Stability:

Store at 4 °C short term. Aliquot and store at -20 °C long term. Avoid freeze-thaw cycles.

Isotype:

IgG

DATA:



Western blot detection of TRAPPC2 in HeLa,HL-60 using TRAPPC2 antibody(1:1000 diluted)

Note:

For research use only, not for use in diagnostic procedure.

Bioworld Technology, Inc.

Add: 1660 South Highway 100, Suite 500 St. Louis Park, MN 55416, USA.

Email: info@bioworld.com

Tel: 6123263284

Fax: 6122933841

Bioworld technology, co. Ltd.

Add: No 9, weidi road Qixia District Nanjing, 210046, P. R. China.

Email: info@biogot.com

Tel: 0086-025-68037686

Fax: 0086-025-68035151